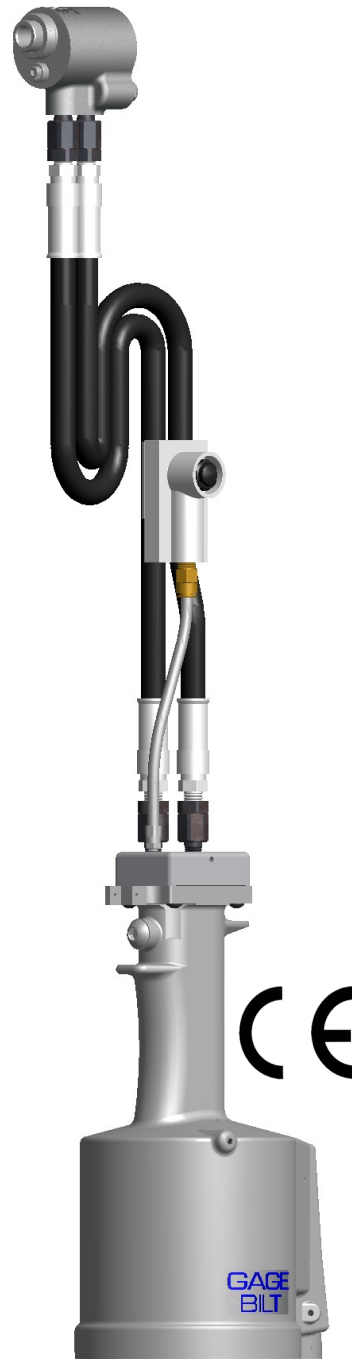


ORIGINAL INSTRUCTIONS

GB745/206-500-5

INSTALLATION TOOL



GAGE BILT TOOLS ARE AVAILABLE WORLDWIDE
E-MAIL US FOR A DISTRIBUTOR NEAR YOU.

Registered to
ISO 9001:2015

GAGE BILT
 **MADE in USA**

44766 Centre Court, Clinton Twp., MI. 48038 USA
Ph: +1 (586) 226-1500 Fax: +1 (586) 226-1505
solutions1@gagebilt.com / www.gagebilt.com



| | <u>Page</u> |
|-----------------------------------------------------------------------|--------------------|
| EU Conformity and Warranty | 3 |
| Description and Technical Specifications | 4 |
| Description of Functions | 5 |
| Warnings..... | 6 |
| Principle of Operation | 7 |
| How to set-up the GB745/206-500..... | 8 |
| How to use the GB745/206-500 | 9 |
| Maintenance and Hydraulic Thread Preparation | 10 |
| Filling and Bleeding | 11-14 |
| Troubleshooting | 15 |
| Bleeding Tool using the GB946 Powerunit (Standard Bleed) | 16-17 |
| Bleeding Tool using the GB946 Powerunit (Overhaul Bleed) | 18-19 |
| Overhaul | 20-21 |
| Parts Lists..... | 22-23 |
| DEXRON® III Oil Safety Data (SDS) | 24 |
| Nose Assembly Selection Chart | 25 |
| Accessories | 26-28 |

GAGE BILT

DECLARATION OF CONFORMITY

MANUFACTURER: Gage Bilt Inc. 44766 Centre Ct. Clinton Twp. Michigan U.S.A. +1(586-226-1500)

WE DECLARE THAT THE EQUIPMENT SPECIFIED HEREIN CONFORMS TO THE FOLLOWING DIRECTIVES AND STANDARDS

Machinery Directive 2006/42/EC

EN12100-1 & EN12100-2

EN792-1:2000+A1

The Supply of Machinery (Safety) Regulations 2008

EU REPRESENTATIVE: Edgar Hausmann GmbH Förster-Busch-Str. 10 D-34346 Hann. Münden Germany

EQUIPMENT DESCRIPTION: GB745/206-500-5 FASTENER INSTALLATION TOOL

This product specified above conforms to the above directives and standards.

SIGNATURE:



NAME: Tim Simmons
PRODUCT MANAGER
CLINTON TWP., MI. U.S.A.
SEPT. 2022
+1(586) 226-1500



WARRANTY

Seller warrants that all goods covered by this catalog will conform to applicable specifications and will replace or repair, EXW our plant, any goods providing defective from faulty workmanship, or material, for 1 year from date of shipment.

Said warranty to remain in effect if and only if such goods are used in accordance with all instructions as to maintenance, operation and use, set forth in manuals and instruction sheets furnished by seller.

Seller obligation under this warranty shall be limited to the repair or rework of the goods supplied or replacement thereof, at Seller's option, and in no case is to exceed the invoice value of said goods. Under no circumstances will the seller be liable for incidental or consequential damages or for damages incurred by the buyer or subsequent user in repairing or replacing defective goods or if the goods covered by this warranty are reworked or subjected to any type of additional processing.

This warranty is void if Seller is not notified in writing of any rejections or defects within 1 year after the receipt of the material by the customer.

THIS WARRANTY IS MADE IN LEIU OF ALL OTHER WARRANTIES EXPRESSED OR IMPLIED, INCLUDING MERCHANTABILITY.

DESCRIPTION



⚠ WARNING: Any other use is forbidden.

The GB745/206-500-5 Split Handle Pneumatic-Hydraulic Installation Tool is designed specifically for the efficient installation of blind rivets and lockbolt fasteners. This tool's unique "split" system provides the operator with a lightweight ergonomic tool for a fraction of the cost of other cumbersome power rigs. It has a .500" (12.7mm) fastener setting stroke with a rated pull load of 5,600 lbs. (24.9 kN) at 90 psi. (6.2 bar) air pressure at the air inlet.

The GB745/206-500-5 comes with 5 ft. (1.5 m) of hose and a remote actuator. The GB745/206-500-5 cylinder when held in your hand, weighs 2.0 lbs. (.91 kg). While the entire split handle installation tool weighs 12 lbs. (5.44 kg).

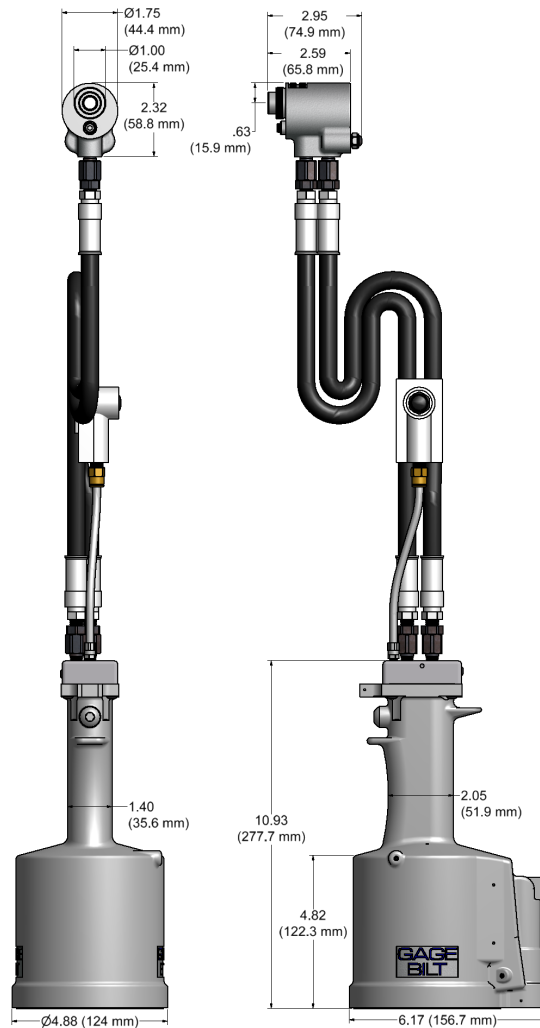
The GB745/206-500-5 Split Handle Pneumatic-Hydraulic Installation Tool operates on 90 - 100 psi. (6.2 - 6.9 bar) of air pressure, with 90 psi. (6.2 bar) providing maximum efficiency. At 90 psi. (6.2 bar) of air pressure the GB745/206-500-5 does not exceed 81.5 dB(A) and consumes .30 SCF/cycle (8.50 L/cycle).

NOSE ASSEMBLIES ARE NOT FURNISHED WITH THE INSTALLATION TOOL AND MUST BE ORDERED SEPARATELY. (See nose assembly selection chart on pg. 25).

ENVIRONMENTAL USE

⚠ WARNING: Do not operate in an explosive atmosphere.

The GB745/206-500-5 can be operated between 0°F - 118°F (-17.8°C / 47.8°C)



SPECIFICATIONS

| | |
|--------------------|-----------------------------------------------------------|
| Hand Held Weight | - 2.0 lbs. (.91 kg) |
| Weight | - 12 lbs. (5.44 kg) |
| Air pressure req'd | - 90 - 100 p.s.i. (6.2 - 6.9 bar) Max. |
| Air consumption | - .30 SCF/cycle (8.50 L/cycle). |
| Hydraulic Oil | - Automatic Transmission Oil, Dexron® III, or equivalent. |
| Setting stroke | - .500" (12.7mm) |
| Rated pull load | - 5,600 lbs. (24.9 kN) |
| Noise level | - Less than 81.5 dB(A) |

DESCRIPTION OF FUNCTIONS

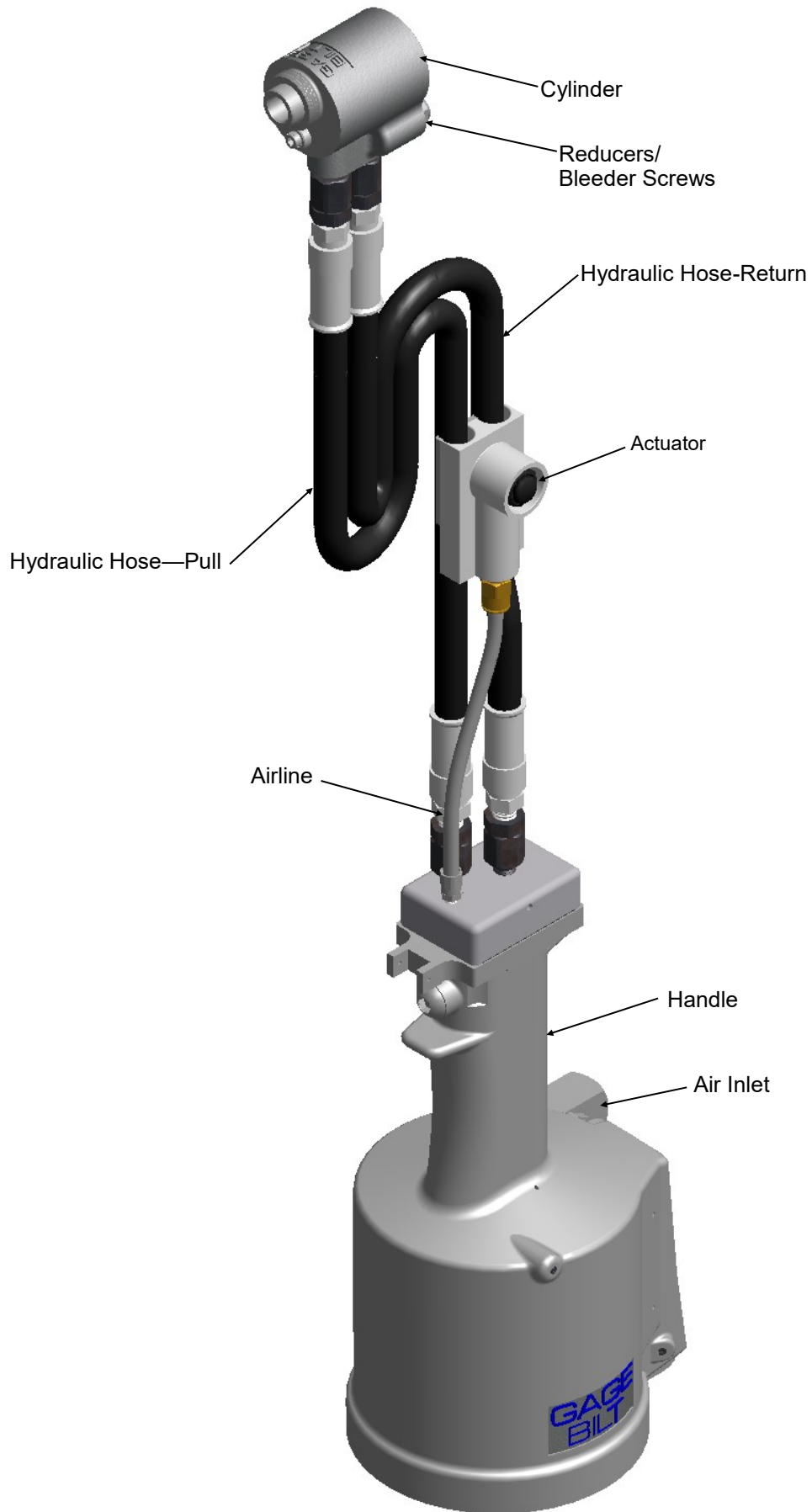



Image may not reflect actual tool





TERMS AND SYMBOLS


 - Product complies with requirements


 - Product complies with requirements

 - Hearing protection and eye protection

 - Read manual prior to using equipment

 - Wear safety boots

 **WARNINGS** - Must be understood to avoid severe personal injury.

 **CAUTIONS** - show conditions that will damage equipment and/or structure.

Notes - are reminders of required procedures.

GENERAL SAFETY RULES:

1. For multiple hazards, read and understand the safety instructions before installing, operating, repairing, maintaining, changing accessories on, or working near the assembly power tool for non-threaded mechanical fasteners.
2. Only qualified and trained operators shall install, adjust or use the assembly power tool for non threaded mechanical fasteners.
3. Do not modify this assembly power tool for non-threaded mechanical fasteners. Modifications can reduce effectiveness of safety measures and increase the risks to the operator.
4. Do not discard safety instructions; give them to the operator.
5. Do not use assembly power tool for non-threaded mechanical fasteners if it has been damaged.
6. Tools shall be inspected monthly to verify all ratings and markings required are legible. The employer/user shall contact the manufacturer to obtain replacement marking labels when necessary.

ADDITIONAL SAFETY RULES FOR PNEUDRAULIC POWER TOOLS:

1. Air under pressure can cause severe injury.
2. Always shut off air supply, drain hose of air pressure and disconnect tool from air supply when not in use, before changing accessories or when making repairs.
3. Never direct air at yourself or anyone else.
4. Whipping hoses can cause severe injury. Always check for damage or loose hoses and fittings.
5. Cold air shall be directed away from hands.
6. Whenever universal twist couplings (claw couplings) are used, lock pins shall be installed and whip check safety cables shall be used to safeguard against possible hose-to-tool or hose-to-hose connection failure.
7. Do not exceed the maximum air pressure stated on the tool or manual.
8. Never carry an air tool by the hose.

PROJECTILE HAZARDS:

1. Disconnect the tool from the energy source when changing inserted tools/nose assemblies or accessories.
2. Be aware that failure of the workpiece, accessories, or the inserted tool/nose assembly itself can generate high-velocity projectiles.
3. Always wear impact resistant eye protection during operation of the tool.
4. Ensure that the workpiece is securely fixed.
5. Check that the means of protection from ejection of fastener and/or stem is in place and operative (such as the deflector, pintail collection bottle or catcher bag).
6. Forcible ejection of the mandrel from the front of the nose assembly is possible.

OPERATING HAZARDS:

1. Use of tool can expose the operator's hands to hazards, including crushing, impacts, cuts, abrasions and heat. Wear suitable gloves to protect hands.
2. Operators and maintenance personnel shall be physically able to handle the bulk, weight and power of the tool.
3. Hold the tool correctly; be ready to counteract normal or sudden movements and have both hands available.
4. Maintain a balanced body position and secure footing.
5. Release the start-and-stop device in the case of interruption of energy supply.
6. Use only lubricants recommended by the manufacturer.
7. Avoid unsuitable postures as it is likely for these positions not to allow counteracting of normal or unexpected movement of the tool.
8. If the tool is fixed to a suspension device, make sure that fixation is secure.
9. Beware of the risk of crushing or pinching if nose equipment is not fitted.
10. Due to the tool weight, it is recommended safety shoes be worn during operation.
11. It is recommended tool be operated not more than 50 out of every 60 minutes, where prolonged use is expected.

REPETITIVE MOTIONS HAZARDS:

1. When using the tool, the operator can experience discomfort in the hands, arms, shoulders, neck or other parts of the body.
2. While using the tool, the operator should adopt a comfortable posture while maintaining a secure footing and avoiding awkward or off balanced postures. The operator should change posture during extended tasks; this can help avoid discomfort and fatigue.
3. If the operator experiences symptoms such as persistent or recurring discomfort, pain, throbbing, aching, tingling, numbness, burning sensations or stiffness, these warning signs should not be ignored. The operator should tell the employer and consult a qualified health professional.

ACCESSORY HAZARDS:

1. Disconnect tool from energy supply before changing the nose assembly or accessory.
2. Use only sizes and types of accessories approved by the manufacturer. Do not use other types or sizes of accessories.

WORKPLACE HAZARDS:

1. Slips, trips and falls are major causes of workplace injury. Be aware of slippery surfaces caused by use of tool and also of trip hazards caused by the air line or hydraulic hose.
2. Proceed with care in unfamiliar surroundings. There could be hidden hazards, such as electricity or other utility lines.
3. The tool is not intended for use in potentially explosive atmospheres and is not insulated against contact with electrical power.
4. Ensure that there are no electrical cables, gas pipes, etc., which can cause a hazard if damaged by the tool.

NOISE HAZARDS:

1. Exposure to high noise levels can cause permanent, disabling hearing loss and other problems, such as tinnitus (ringing, buzzing, whistling or humming in the ears). Therefore, risk assessment and the implementation of appropriate controls for these hazards are essential.
2. Appropriate controls to reduce the risk may include actions such as damping materials to prevent workpieces from "ringing".
3. Always use hearing protection.
4. Operate and maintain the assembly power tool for non-threaded mechanical fasteners as recommended in the instruction handbook, to prevent an unnecessary increase in the noise level.
5. Select, maintain and replace the consumable/inserted tool as recommended in the instruction handbook, to prevent an unnecessary increase in noise.
6. If the power tool has a silencer, always ensure that it is in place and in good working order when the power tool is being operated.

VIBRATION HAZARDS:

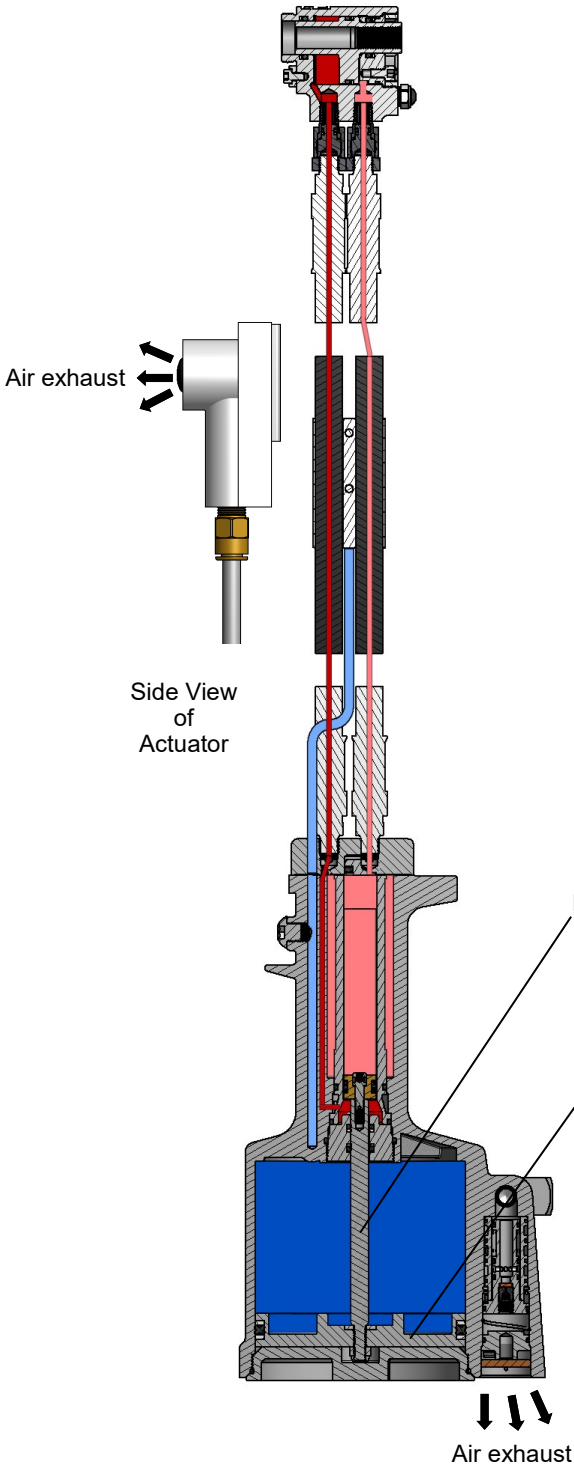
1. Exposure to vibration can cause disabling damage to the nerves and blood supply of the hands and arms.
2. Wear warm clothing when working in cold conditions and keep your hands warm and dry.
3. If you experience numbness, tingling, pain or whitening of the skin in your fingers or hands, stop using the assembly power tool for non-threaded mechanical fasteners, tell your employer and consult a physician.
4. Support the weight of the tool in a stand, tensioner or balancer, because a lighter grip can then be used to support the tool.



When the actuator is depressed, the throttle valve is shifted, directing the pressurized air inside the tool to the bottom of the air piston assembly, moving it in an upward direction. The air above the air piston assembly is then directed out the exhaust, on the bottom of the tool. Simultaneously, the piston rod assembly connected to the air piston assembly is also moving up, forcing hydraulic oil up and into the front of the cylinder, causing the piston assembly to move to the rear of the cylinder. The oil from the rear of the cylinder is directed to the bottom of the piston rod assembly, inside the handle assembly. The internal components of the attached nose assembly are also moving with the piston assembly to start the fastener installation. When the fastener installation is completed the actuator is released allowing spring pressure to move the throttle valve to shift, directing the air pressure to the top side of the air piston assembly and reversing the sequence.

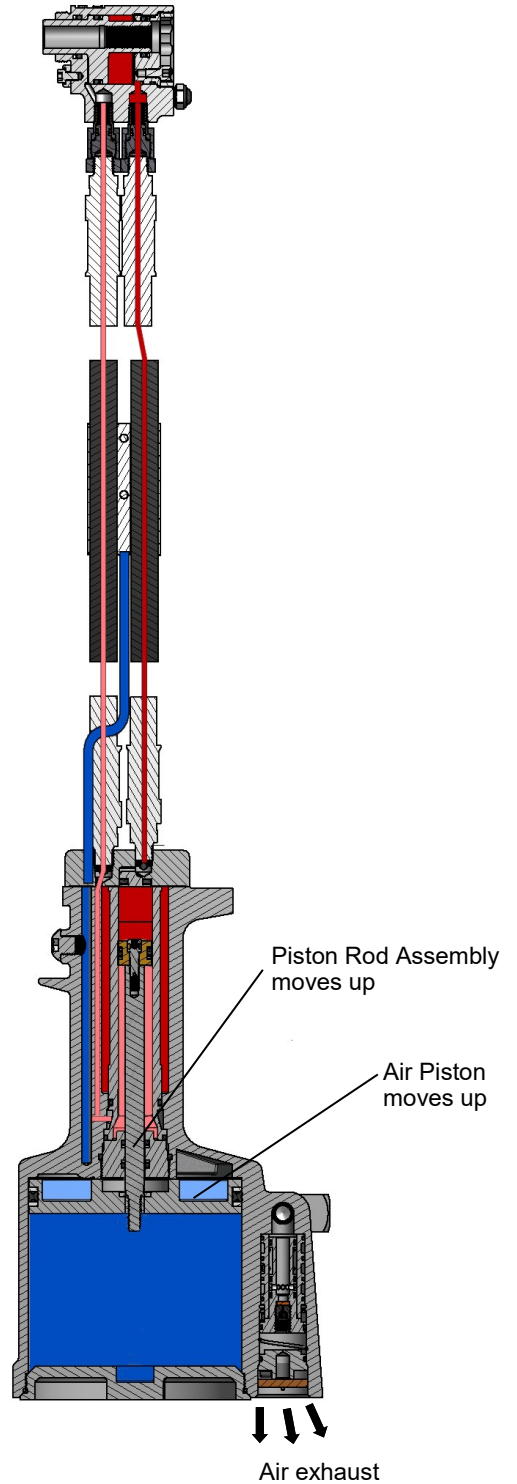
PULL Cycle





Piston Travel →



RETURN Cycle

← Piston Travel



-  Pressurized Oil
-  Unpressurized Oil
-  Pressurized Air
-  Unpressurized Air

Images may not reflect actual tool

HOW TO SET-UP THE GB745/206-500-5



- ⚠ WARNING:** Only qualified and trained operators shall install, adjust or use the assembly power tool for non-threaded mechanical fasteners.
- ⚠ WARNING:** Operator **MUST** read and understand all warnings and cautions.
- ⚠ WARNING:** It is required that eye protection, hearing protection and safety boots be worn at all times while handling this equipment.
- ⚠ WARNING:** The users or the user's employer must assess specific risks that could be present as a result after each use based on their application.
 - *Ensure there is adequate clearance for tool and operator's hands before proceeding. Keep fingers clear of any moving parts. Keep fingers clear from fasteners and installed materials. Severe personal injury may result.*
 - *Verify the air lines and/or hydraulic hoses are not a trip hazard.*
 - *Ensure that there are no electrical cables, gas pipes, etc., which can cause a hazard if damaged by the tool.*
- ⚠ WARNING:** Do not actuate fastener in the air. Personal injury from fastener ejecting may occur.
- ⚠ WARNING:** Air is exhausted from the bottom of the tool. Direct bottom of the tool (exhausted air) away from operator, other persons working in the vicinity, foreign matter and liquid.
- ⚠ WARNING:** Do not carry from hoses or use as a hammer.
- ⚠ WARNING:** Do not use in explosive atmosphere.
- ⚠ WARNING:** Ensure air hose is securely connected to avoid possible hose whipping.
- ⚠ WARNING:** Always disconnect air supply when tool is not in use to prevent accidental start-up.
- ⚠ WARNING:** Ensure there is adequate clearance for tool and operator hands.
- ⚠ WARNING:** Do not operate this tool without deflector, pintail catcher bag or pintail collection bottle in place.
- ⚠ CAUTION:** Do not use beyond the design intent.

The tool is shipped with a red plastic plug in the air inlet connector. The connector has a 1/4 - 18 female pipe thread to accept user air hose fitting. The tool comes with oil and is ready to use.

1. Remove red plastic shipping plug from Swivel (A-249) (air inlet) and screw in your quick disconnect (air) fitting.
2. Connect tool to air hose with 90 psi. (6.2 bar) using clean, dry air. 3/8" (9.52 mm) minimum diameter air line is recommended. Cycle tool five times by depressing and releasing actuator assembly-air (704130).
3. Disconnect air hose from tool.
4. Select proper nose assembly. (See nose assembly selection chart on pg. 25 for more information). Screw drawbar into piston on tool and secure using hex key on front of drawbar. (See proper data sheet for further instructions).
5. Connect air supply.

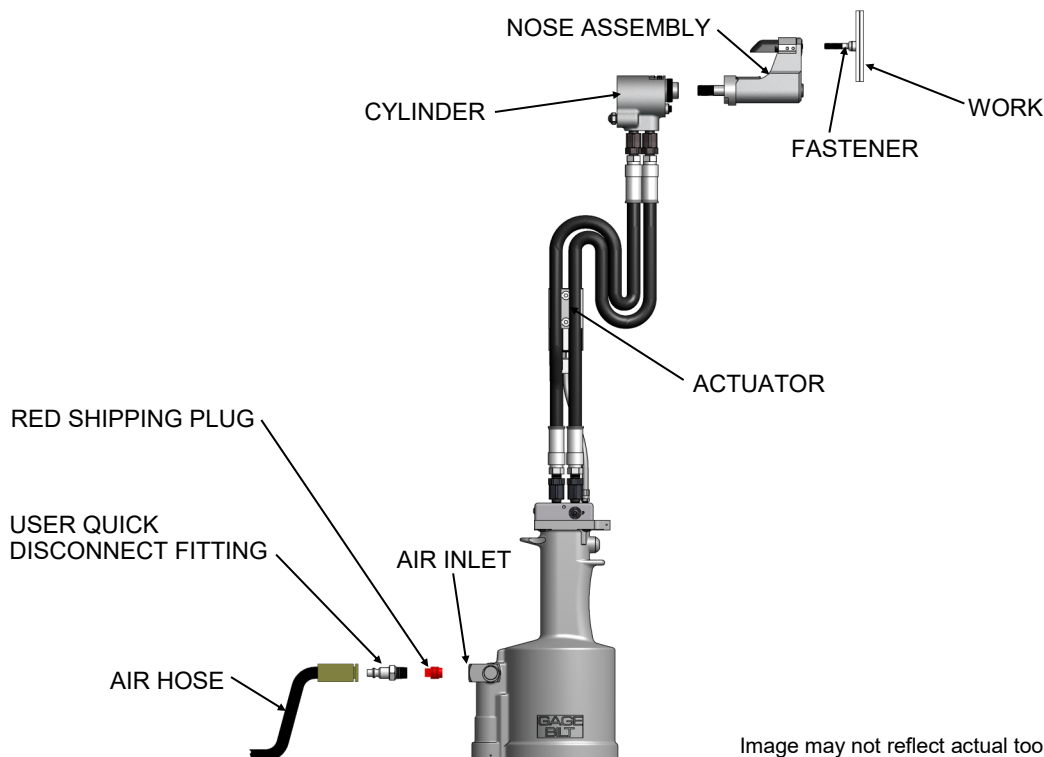


Image may not reflect actual tool



- ⚠ WARNING:** Only qualified and trained operators shall install, adjust or use the assembly power tool for non-threaded mechanical fasteners.
- ⚠ WARNING:** Operator **MUST** read and understand all warnings and cautions.
- ⚠ WARNING:** It is required that eye protection, hearing protection and safety boots be worn at all times while handling this equipment.
- ⚠ WARNING:** The users or the user's employer must assess specific risks that could be present as a result after each use based on their application.
 - *Ensure there is adequate clearance for tool and operator's hands before proceeding. Keep fingers clear of any moving parts. Keep fingers clear from fasteners and installed materials. Severe personal injury may result.*
 - *Verify the air lines and/or hydraulic hoses are not a trip hazard.*
 - *Ensure that there are no electrical cables, gas pipes, etc., which can cause a hazard if damaged by the tool.*
- ⚠ WARNING:** Do not actuate fastener in the air. Personal injury from fastener ejecting may occur.
- ⚠ WARNING:** Air is exhausted from the bottom of the tool. Direct bottom of the tool (exhausted air) away from operator, other persons working in the vicinity, foreign matter and liquid.
- ⚠ WARNING:** Do not carry from hoses or use as a hammer.
- ⚠ WARNING:** Do not use in explosive atmosphere.
- ⚠ WARNING:** Ensure air hose is securely connected to avoid possible hose whipping.
- ⚠ WARNING:** Always disconnect air supply when tool is not in use to prevent accidental start-up.
- ⚠ WARNING:** Ensure there is adequate clearance for tool and operator hands.
- ⚠ WARNING:** Do not operate this tool without deflector, pintail catcher bag or pintail collection bottle in place.
- ⚠ CAUTION:** Do not use beyond the design intent.

Lockbolts

1. Insert fastener through the work piece.



2. Slide collar over fastener.

Note: Always hold tool so pulling head is perpendicular to surface of material in which fastener is being installed. Exert firm pressure against fastener during installation.



3. Insert tool onto fastener.



4. Press actuator to start cycle.
5. Release actuator as soon as fastener breaks.
6. Repeat steps 1 - 5.

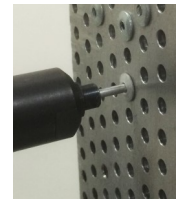
Blind Fasteners

1. Insert fastener.

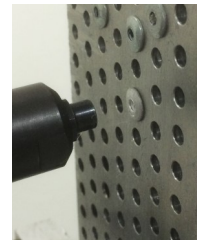


2. Insert fastener into nose assembly.

Note: Always hold tool so pulling head is perpendicular to surface of material in which fastener is being installed. Exert firm pressure against fastener during installation.



3. Press actuator to start cycle.



4. Release actuator as soon as fastener breaks.
5. Repeat steps 1 - 4.

Images may not reflect actual tool or fastener

DAILY MAINTENANCE



- ⚠ WARNING:** Tool must be maintained in a safe working condition at all times and examined on a daily basis for damage or wear. Any repair must be done by qualified personnel trained on Gage Bilt procedures.
- ⚠ WARNING:** Excessive contact with hydraulic oil and lubricants must be avoided.
- ⚠ WARNING:** Maintenance personnel **MUST** read and understand all warnings and cautions.
- ⚠ WARNING:** Disconnect tool from its power source before performing maintenance, cleaning or when replacing worn or damaged components. Severe personal injury may occur if power source is not disconnected.
- ⚠ WARNING:** Read material Safety Data Sheet documents for all applicable materials.

Note:

- Dispose of hydraulic oil in accordance with manufacture safety datasheet.
- All tool materials are recyclable except rubber o'rings, seals and wipers.

The performance of any tool depends upon good maintenance practices. Following these minimal requirements for service and care will extend the life of your tool.

- * Only use a clean dry air supply set at 90 - 100 p.s.i. (6.2 - 6.9 bar) Max. equipped with a filter-regulator to prevent wear.
- * Proper care by operator is necessary in maintaining full productivity and reducing downtime. Read all applicable tool manuals and nose assembly data sheets prior to operating tools.
- * Check tool and nose assembly for damage. (Replace/Repair if necessary). See overhaul pgs. 20 - 21 for tool repair.
- * Inspect hoses and couplings for wear, damage and leaks. (Replace/Repair if necessary).
- * Verify that hydraulic hose fittings and couplings, air and electrical connections are secure. Tighten, Replace or Repair if necessary. (See *hydraulic thread preparation below*).
- * Keep nose assemblies, especially jaws, clean and free of chips and debris. Lube jaws and collet surfaces that jaws ride on with light machine oil on a daily basis.
- * All Screwed End Caps, Base Covers, Air Fittings, Air Actuators, Screws and Nose Assemblies are to be examined at the end of each working shift to check that they are secure.
- * Check tool, all hoses and all couplings daily for damage or air/hydraulic leaks. Tighten or replace (if necessary).
- * A complete overhaul can be achieved by the use of Service Kit (745214) which contains a complete set of o'rings, back-up rings, screws, washers and gasket.
- * For a complete overhaul, service tool kit (GB745/204TK-1) is recommended. See overhaul pgs. 20 - 21.

WEEKLY MAINTENANCE

- Keep the hydraulic system full (only use Dexron® III or equivalent) and free of air by using the air bleeder assembly (704153) on a weekly basis or as needed. (See Filling and Bleeding procedure pgs. 11 - 14).

SEE TROUBLESHOOTING (PG. 15) AND OVERHAUL (PGS. 20 - 21) FOR FURTHER GUIDANCE.

HYDRAULIC THREAD PREPARATION

IMPORTANT: Be sure to use thread sealant on all hydraulic fittings, Loctite® 545 or equivalent or a non-hardening Teflon® thread compound such as Slic-tite®. Tighten until fitting feels snug and then continue to tighten 1/2 to 1 full turn. **CAUTION:** Over tightening can easily distort the threads. DO NOT USE TEFLON® TAPE. **CAUTION:** Teflon® tape is an excellent thread sealer, however, if it is not properly applied, pieces of Teflon® may enter the hydraulic system and cause a malfunction or damage.

TORQUE SPECIFICATIONS

Button Head Cap Screws (A-928) = 40 inch lbs. (4.52 Nm).
Packing Plug (744118) = 45 foot lbs. (61 Nm).
Flexlock Nut (400559) = 40 inch lbs. (4.52 Nm).
Button Head Cap Screws (402482) = 35 - 40 inch lbs. (3.95 - 4.52 Nm) (*Do NOT over-tighten*).

FILLING PROCEDURE



- ⚠ WARNING:** Do not cycle tool without air bleeder assembly (704153), or the screw and stat-o-seal, installed in tool head. Severe personal injury could result.
- ⚠ CAUTION:** Before filling handle assembly (744129), air piston assembly (744121) should be all the way down.
- ⚠ CAUTION:** When forcing piston rod assembly (745347) downward, with cylinder (204300) removed, hydraulic oil will eject forcibly from handle assembly (744129).
- ⚠ CAUTION:** When bleeding tool, ensure tubing is free from kinks or other obstructions.
- ⚠ CAUTION:** Use CAUTION when removing screws, air bleeder assembly (704153) and fill bottle (745263). Hydraulic oil may be under pressure.

Note:

- Air Bleeder Assembly (704153) (sold separately) & Fill Bottle (745263) (sold separately) are required.

* **FILLING & BLEEDING VIDEO AVAILABLE AT:** http://www.gagebilt.com/rivet_tools_videos.php

IMPORTANT: Be sure to use thread sealant on all hydraulic fittings, Loctite® 545 or equivalent or a non-hardening Teflon® thread compound such as Slic-tite®. Tighten until fitting feels snug and then continue to tighten 1/2 to 1 full turn. **CAUTION:** Over tightening can easily distort the threads. **DO NOT USE TEFLON® TAPE.** **CAUTION:** Teflon® tape is an excellent thread sealer, however, if it is not properly applied, pieces of Teflon® may enter the hydraulic system and cause a malfunction or damage.

Should it become necessary to completely refill the tool (such as would be required after tool has been dismantled and reassembled), follow all steps (1 thru 19) for filling procedure on this and next page.

1. Ensure air piston assembly (744121) is at the bottom of stroke by pushing piston rod assembly (745347) down, piston assembly (206129) is in rear position, dimension "B".
2. Fill power cylinder (745345) and oil passage to the top, where o'ring (S832) sits.
3. Place gasket (745124) and o'ring (S832) on top of the handle assembly (744129).
4. Install manifold-handle (745303), carefully install button head cap screws (A-928). Torque to 40 inch lbs. (4.52 Nm).
5. With hydraulic hoses (A-1668) attached to cylinder (204300), attach hydraulic hoses (A-1668) to swivel assembly (204304) (2X) on the manifold-handle (745303).
6. Stretch tool out horizontally and lay flat on table or floor.
7. Remove button head cap screw (402482) and stat-o-seal (S572) from hole marked "P" on head cylinder (204300) and hole marked "P" on manifold handle (745303).
8. Attach fill bottle (745263), to bleeder hole marked "P" on manifold handle (745303).
9. Squeeze fill bottle (745263) on manifold-handle (745303) until oil flows through hole marked "P" on head cylinder (204300).
 - 9a. Install button head cap screw (402482) and stat-o-seal (S572) in hole marked "P" on head cylinder (204300) and torque 35 - 40 inch lbs. (3.95 - 4.52 Nm). Do not over tighten.
 - 9b. Remove fill bottle (745263) and install button head cap screw (402482) and stat-o-seal (S572) in hole marked "P" on manifold handle (745303).
10. If oil does not flow through hole marked "P" on head cylinder (204300) in one squeeze:
 - 10a. Cover hole marked "P" on head cylinder (204300), remove fill bottle (745263) to allow bottle to expand.
 - 10b. Reattach fill bottle (745263) then uncover hole marked "P" on head cylinder (204300) and squeeze fill bottle (745263) again until oil flows through hole marked "P" on head cylinder (204300).
 - 10c. Install button head cap screw (402482) and stat-o-seal (S572) in hole marked "P" on head cylinder (204300) and torque 35 - 40 inch lbs. (3.95 - 4.52 Nm). Do not over tighten.
 - 10d. Remove fill bottle (745263) and install button head cap screw (402482) and stat-o-seal (S572) in hole marked "P" on manifold handle (745303).
11. Repeat steps 7 - 10 using the return pressure holes: the bleeder hole marked "R" on manifold-handle (745303) and hole marked "R" on rear of cylinder (204300).

*****CONTINUE FILLING PROCEDURE #12 THRU #19 ON NEXT PAGE*****



- ⚠ WARNING:** Do not cycle tool without air bleeder assembly (704153), or the screw and stat-o-seal, installed in tool head. Severe personal injury could result.
- ⚠ CAUTION:** Before filling handle assembly (744129), air piston assembly (744121) should be all the way down.
- ⚠ CAUTION:** When forcing piston rod assembly (745347) downward, with cylinder (204300) removed, hydraulic oil will eject forcibly from handle assembly (744129).
- ⚠ CAUTION:** When bleeding tool, ensure tubing is free from kinks or other obstructions.
- ⚠ CAUTION:** Use CAUTION when removing screws, air bleeder assembly (704153) and fill bottle (745263). Hydraulic oil may be under pressure.

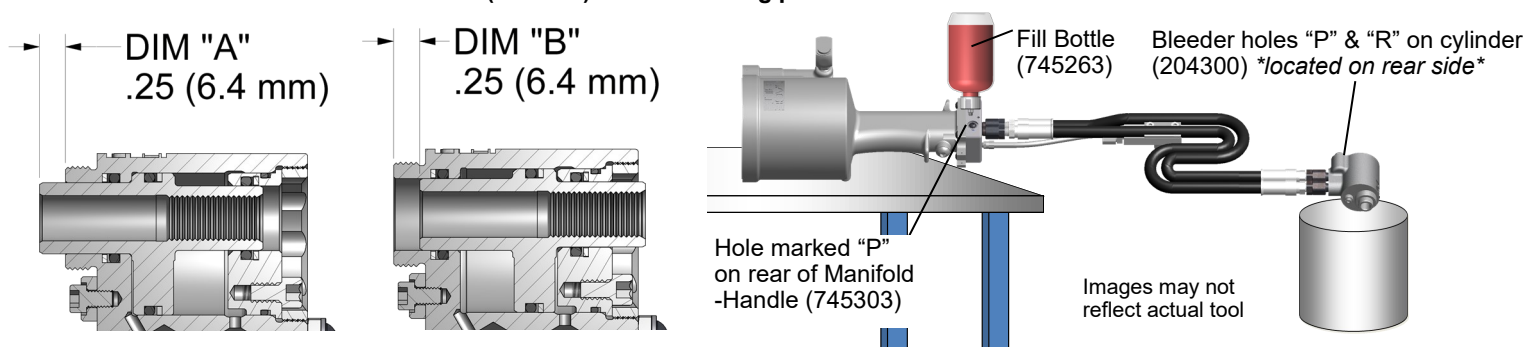
Note:

- Air Bleeder Assembly (704153) (sold separately) & Fill Bottle (745263) (sold separately) are required.

* FILLING & BLEEDING VIDEO AVAILABLE AT: http://www.gagebilt.com/rivet_tools_videos.php

Should it become necessary to completely refill the tool (such as would be required after tool has been dismantled and reassembled), follow all steps (1 thru 19) for filling procedure on previous and this page.

12. Remove button head cap screw (402482) and stat-o-seal (S572) to hole marked "P" on manifold handle (745303) and attach air bleeder assembly (704153).
 - 12a. Connect tool to air.
13. Slowly loosen button head cap screw (402482) and on hole marked "R" on manifold handle (745303) **caution tool is under pressure.**
 - 13a. Let oil seep out of hole marked "R".
 - 13b. Tighten button head cap screw (402482) on hole marked "R" on manifold handle (745303).
 - 13c. Cycle tool 10 times.
14. Disconnect tool from air.
 - 14a. Remove air bleeder assembly (704153) and attach button head cap screw (402482) and stat-o-seal (S572) to hole marked "P" on manifold handle (745303).
15. Remove button head cap screw (402482) and stat-o-seal (S572) from hole marked "P" on head cylinder (204300) and attach air bleeder assembly (704153).
 - 15a. Connect tool to air and cycle 10 times.
16. Disconnect tool from air.
 - 16a. Remove air bleeder assembly (704153) and attach button head cap screw (402482) and stat-o-seal (S572) to hole marked "P" on head cylinder (204300).
17. Connect tool to air. Slowly loosen button head screw cap on hole marked "R" on head cylinder (204300) **caution tool is under pressure.**
 - 17a. Let oil seep out of hole marked "R".
 - 17b. Tighten button head cap screw (402482) and on hole marked "R" on head cylinder (204300).
18. Using a pair of calipers, check tool for full stroke (.500") (12.7 mm) using instructions 18a. thru 18c. and diagrams below.
 - 18a. With the actuator lever assembly (704340) released, check dimension "A".
 - 18b. While holding actuator lever assembly (704343) in, check dimension "B".
 - 18c. Add "A" dimension to "B" dimension.
19. If stroke is not consistent within 1/64" (.396mm) follow bleeding procedure instructions.



BLEEDING PROCEDURE



- ⚠ WARNING:** Do not cycle tool without air bleeder assembly (704153), or the screw and stat-o-seal, installed in tool head. Severe personal injury could result.
- ⚠ CAUTION:** Before filling handle assembly (744129), air piston assembly (744121) should be all the way down.
- ⚠ CAUTION:** When forcing piston rod assembly (745347) downward, with cylinder (204300) removed, hydraulic oil will eject forcibly from handle assembly (744129).
- ⚠ CAUTION:** When bleeding tool, ensure tubing is free from kinks or other obstructions.
- ⚠ CAUTION:** Use CAUTION when removing screws, air bleeder assembly (704153) and fill bottle (745263). Hydraulic oil may be under pressure.

Note:

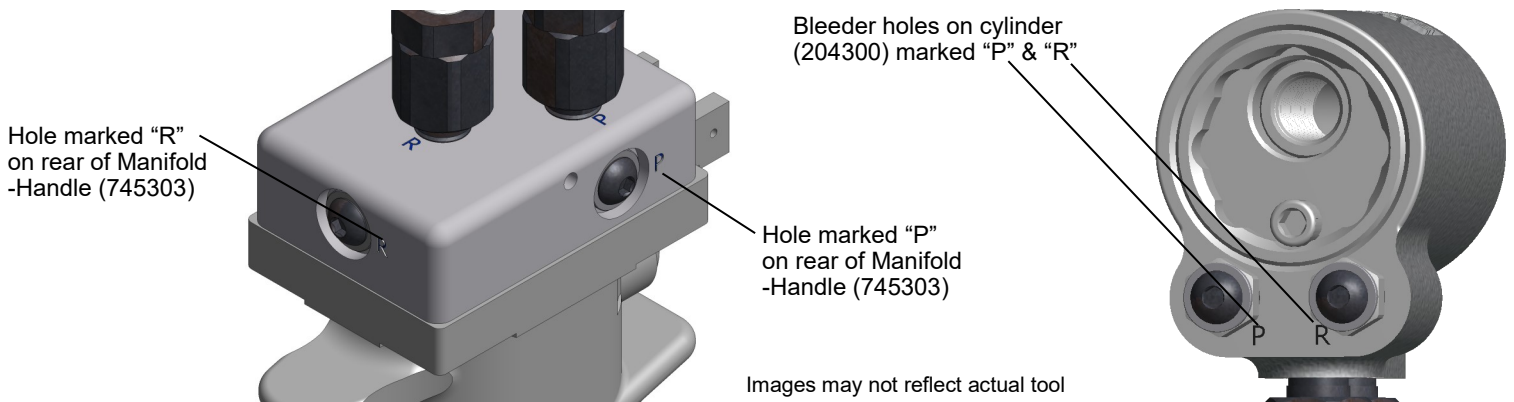
- Air Bleeder Assembly (704153) (sold separately) & Fill Bottle (745263) (sold separately) are required.

* **FILLING & BLEEDING VIDEO AVAILABLE AT:** http://www.gagebilt.com/rivet_tools_videos.php

To replace a small amount of oil in the tool follow all steps (1 thru 16) for bleeding procedure on this and next page.

1. Stand handle assembly (744129) on floor and stretch hose assembly (A-1668) upward on a table or bench, laying head cylinder (204300) flat on its side.
2. Ensure air piston assembly (744121) is up by connecting tool to air and piston assembly (206129) is full forward, dimension "A".
 - 2a. Disconnect air from tool.
3. If dimension "A" does not check full forward:
 - 3a. Remove button head cap screws (402482) and stat-o-seals (S572) from holes marked "P" and "R" on head cylinder (204300).
4. Using a 7/16" (10 mm) hex key, push piston (206129) forward until dimension "A" checks correct.
 - 4a. Attach button head cap screws (402482) and stat-o-seal (S572) to holes marked "P" and "R" on head cylinder (204300).
5. Remove button head cap screw (402482) and stat-o-seal (S572) from hole marked "P" on manifold handle (745303) and attach air bleeder assembly (704153).
 - 5a. Cycle tool ten times.
6. Disconnect air from tool and remove air bleeder assembly (704153).
 - 6a. Attach button head cap screw (402482) and stat-o-seal (S572) to hole marked "P" on manifold handle (745303).
7. Remove button head cap screw (402482) and stat-o-seal (S572) from hole marked "P" on head cylinder (204300).
8. Attach air bleeder assembly (704153) to hole marked "P" on head cylinder (204300).
 - 8a. Cycle tool 10 times.
9. Disconnect tool from air.
 - 9a. Remove air bleeder assembly (704153) and attach button head cap screw (402482) and stat-o-seal (S572) to hole marked "P" on head cylinder (204300).
10. Connect tool to air and cycle tool to rear position (DIM "B"). See images on previous page.
 - 10a. While holding down actuator (704130), disconnect air from tool.

*****CONTINUE BLEEDING PROCEDURE #11 THRU #16 ON NEXT PAGE*****





- ⚠ WARNING:** Do not cycle tool without air bleeder assembly (704153), or the screw and stat-o-seal, installed in tool head. Severe personal injury could result.
- ⚠ CAUTION:** Before filling handle assembly (744129), air piston assembly (744121) should be all the way down.
- ⚠ CAUTION:** When forcing piston rod assembly (745347) downward, with cylinder (204300) removed, hydraulic oil will eject forcibly from handle assembly (744129).
- ⚠ CAUTION:** When bleeding tool, ensure tubing is free from kinks or other obstructions.
- ⚠ CAUTION:** Use CAUTION when removing screws, air bleeder assembly (704153) and fill bottle (745263). Hydraulic oil may be under pressure.

Note:

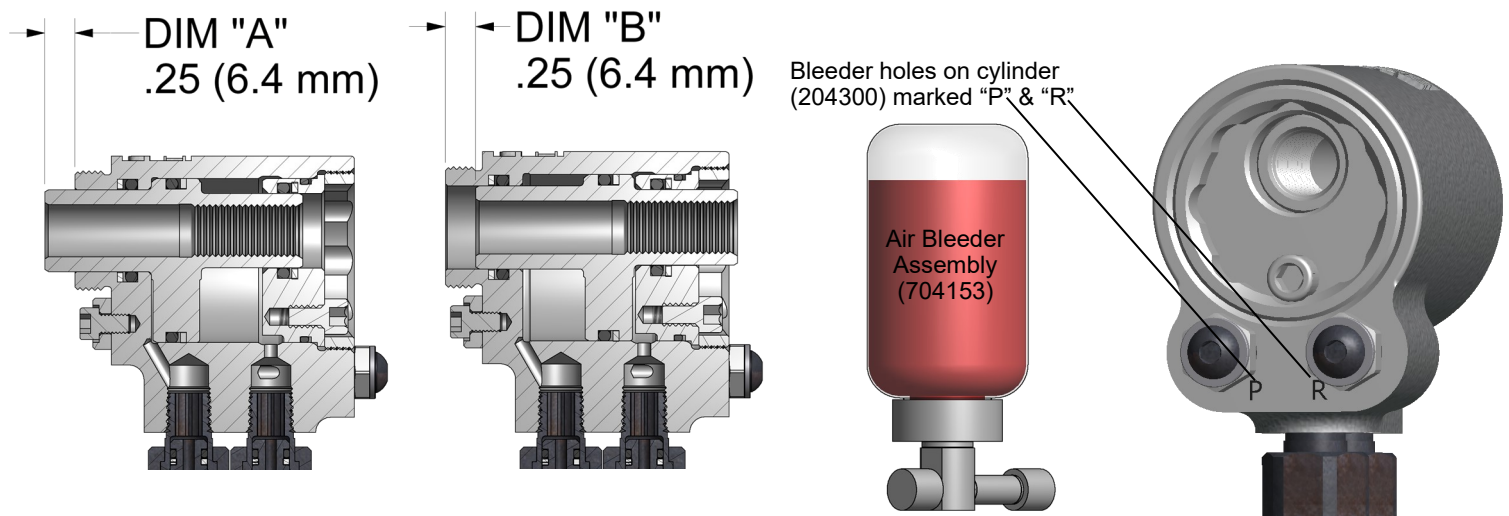
- Air Bleeder Assembly (704153) (sold separately) & Fill Bottle (745263) (sold separately) are required.

* **FILLING & BLEEDING VIDEO AVAILABLE AT:** http://www.gagebilt.com/rivet_tools_videos.php

To replace a small amount of oil in the tool follow all steps (1 thru 16) for bleeding procedure on previous and this page.

11. Remove button head cap screw (402482) and stat-o-seal (S572) from hole marked “R” on head cylinder. **Caution tool is under pressure.**
12. Attach air bleeder assembly (704153) to hole marked “R” on head cylinder (204300).
 - 12a. Cycle tool 10 times.
13. Cycle tool to rear position (dimension “B”).
 - 13a. While holding down actuator (704130) disconnect air from tool.
14. Remove air bleeder assembly (704153) and attach button head cap screw (402482) and stat-o-seal (S572) to hole marked “R” on head cylinder (204300).
15. Connect tool to air.
 - 15a. Slowly loosen button head cap screw (402482) from hole marked “R” on head cylinder (204300) allowing excess oil to seep out.
 - 15b. Tighten button head cap screw.
16. Disconnect air from tool. If piston (206129) moves from “A” dimension towards dimension “B”: Repeat steps 10 - 15.
 - If piston (206129) does not move from dimension “A” towards dimension “B”: Use a pair of calipers to check tool for full stroke (.500”) (12.7 mm) using instructions “a” thru “c” below.
 - a. With the actuator assembly-air (704130) released, check dimension “A”.
 - b. While holding actuator assembly-air (704130) in, check dimension “B”.
 - c. Add dimension “A” to dimension “B”. If stroke is not consistent within 1/64” (.396 mm) follow bleeding procedure instructions again.

For your consideration, Gage Bilt offers a depth gage (Pt.# A-1935) to help simplify and more accurately check your tool stroke. Please contact Gage Bilt for more information.



Images may not reflect actual tool



1. Check air line for correct pressure at the tool. It must be 90 - 100 psi. (6.2 - 6.9 bar) Max.
2. Check tool for lack of hydraulic oil. (See filling & bleeding procedures pgs. 11 - 14).
3. Check for oil leakage.
 - a. Hydraulic oil leaks from connections. Tighten threaded connections.
 - b. If oil should leak through the by-pass hole at the base of the handle assembly (744129), quad rings (401462) is worn or damaged.
 - c. Oil leaking from the front of the cylinder (204300) indicates that o'ring (403802) is worn or damaged.
4. Check for excessive air leakage from air valve.
 - a. If spring (744144) is broken or dislodged, air will bleed directly through the bottom of the air valve and the piston assembly (206129) will retreat to its full stroke without returning.
 - b. If o'ring (400785) on valve plug (744142) is worn or damaged, replace.
 - c. If o'rings (400779) on valve spool assembly (743142) are worn or damaged, replace.
5. Check movement of piston assembly (206129). If it does not move freely or is slow in operation.
 - a. O'ring (403810) may be damaged and require replacement.
 - b. Piston may be mechanically locked due to damaged parts.
 - c. Muffler (744143) or air filter inside valve spool assembly (743142) may be blocked or damaged. Hole diameter should be .028" (.071 mm). Clear and size or replace valve spool assembly (743142).
6. Fastener stem sticks in nose assembly.
 - a. Nose assembly components need maintenance. Disassemble nose assembly, clean and replace worn parts.
 - b. Spent pintail may be jammed in nose assembly. Disassemble nose assembly, remove pintails and reassemble.

GB745/206-500-5 with GB946 BLEED PUMP PROCEDURE:



⚠ WARNING: Keep oil control valve on the GB946 bleed pump in the “OFF” position unless it is being used to bleed the tool or when the hose adapter is placed into a collection container for bleeding. Failure to do so will result in oil shooting from the adapter at 200 psi. (13.8 bar) causing great personal injury.

⚠ WARNING: Use CAUTION when removing bleed screws and stat-o-seals, Hydraulic oil may be under pressure.

⚠ WARNING: Read and understand ALL warnings and cautions in GB946 powerunit manual and on pgs. 11 - 14 before proceeding.

Note:

- GB946 bleed pump and Regulator (756605) are required. (Sold Separately).

IMPORTANT: Be sure to use thread sealant on all hydraulic fittings, Loctite® 545 or equivalent or a non-hardening Teflon® thread compound such as Slic-tite®. Tighten until fitting feels snug and then continue to tighten 1/2 to 1 full turn. **CAUTION:** Over tightening can easily distort the threads. **DO NOT USE TEFLON® TAPE.** **CAUTION:** Teflon® tape is an excellent thread sealer, however, if it is not properly applied, pieces of Teflon® may enter the hydraulic system and cause a malfunction or damage.

STANDARD BLEED: (Make sure oil control valve on the GB946 is turned to the “OFF” position). (See GB946 manual for more information).

1. Connect tool to air to ensure air piston assembly (744121) all the way up, disconnect air.
2. Remove (2X) button head cap screws (402482) and (2X) stat-o-seals (S572) from head cylinder (204300).
3. Ensure piston assembly (206129) is in forward position (.250 ±.005) (19.5mm ±.127mm) (Dim “A”). See image on pg. 14.

Caution: Be aware oil may eject forcefully from open bleeder holes when pushing piston forward.

4. Attach and torque the button head cap screw and stat-o-seal to hole “R” on the head cylinder (204300) to 35 inch lbs. (3.95 Nm). Do not over tighten.
5. Remove the button head cap screw and stat-o-seal from the bleeder hole “P” on the manifold-handle (745303) and attach the pump hose adapter to hole “P” the manifold-handle (745303).

5a. Plug the GB946 powerunit into a 110V electrical source and turn the oil control valve and motor control switch “ON”. (See images below).

6. Hold head cylinder so hole “P” faces down and over your oil collection container.

6a. Press the separate “ON” button (located on the remote) and run pump for 5 - 10 seconds then release the button and turn the oil control valve to the “OFF” position.

7. Re-attach the button head cap screw and stat-o-seal to hole “P” on head cylinder.

7a. Remove the pump hose adapter and re-attach the button head cap screw and stat-o-seal to hole “P” on the manifold-handle.

7b. Torque screws to 35 inch lbs. (3.95 Nm). Do not over tighten.

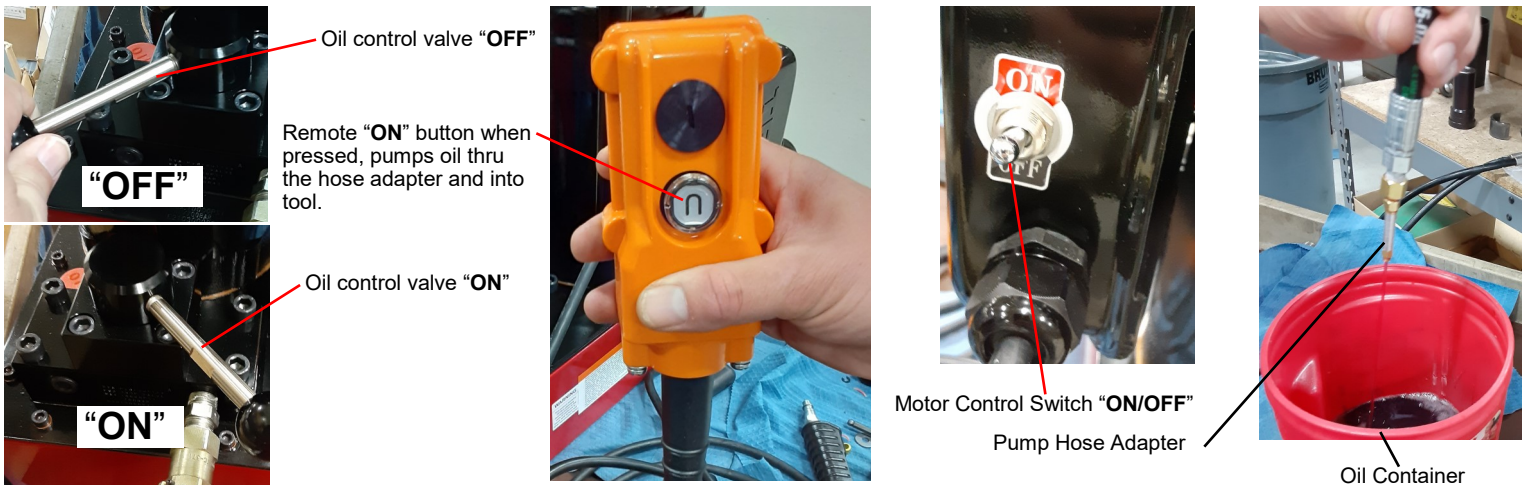
8. Connect regulator (756605) to airline and connect tool to air.

8a. Cycle piston (206129) to rear position (.250 ±.005) (6.4mm ±.127mm) (Dim “B”). See image on pg. 14.

8b. Disconnect air from tool.

***** If piston does not check (.250 ±.005) (6.4mm ±.127mm) (Dim “B”) in the rear position, repeat steps 1 - 8 above. *****

*****CONTINUE #9 THRU #14 ON NEXT PAGE*****





- ⚠ WARNING:** Keep oil control valve on the GB946 bleed pump in the “OFF” position unless it is being used to bleed the tool or when the hose adapter is place into a collection container for bleeding. Failure to do so will result in oil shooting from the adapter at 200 psi. (13.8 bar) causing great personal injury.
- ⚠ WARNING:** Use CAUTION when removing bleed screws and stat-o-seals, Hydraulic oil may be under pressure.
- ⚠ WARNING:** Read and understand ALL warnings and cautions in GB946 powerunit manual and on pgs. 11 - 14 before proceeding.

Note:

- GB946 bleed pump and Regulator (756605) are required. (Sold Separately).

STANDARD BLEED: (Make sure oil control valve on the GB946 is turned to the “OFF” position). (See GB946 manual for more information).

9. Remove button head cap screw and stat-o-seal from hole “R” on head cylinder and hole marked “R” on manifold-handle.
10. Attach the pump hose adapter to hole “R” on manifold handle.
11. Place head cylinder over your oil collection container with hole “R” pointed down and turn the oil control valve and motor control switch to “ON” position. (See images below).
12. Run pump for 5 - 10 seconds by pressing the separate “ON” button (located on the remote).
 - 12a. Release the remote “On” button and turn the oil control valve to the “OFF” position.
13. Re-attach the button head cap screw and stat-o-seal to hole “R” on head cylinder.
 - 13a. Remove the pump hose adapter from hole “R” and re-attach the button head cap screw and stat-o-seal to hole “R”.
 - 13b. Torque screws to 35 inch lbs. (3.95 Nm). Do not over tighten.
14. Ensure regulator (756605) is still attached and connect tool to air.
 - 14a. Slowly loosen button head cap screw on hole marked “R” on head cylinder to allow excess oil to drain.
 - 14b. After excess oil has drained, torque screw to 35 inch lbs.
 - 14c. Measure stroke (.500 ±.010) (12.7mm ±.25mm).

***** If piston does not check (.250 ±.005) (6.4mm ±.127mm) (Dim “A”) in the forward position, repeat steps 9 - 14 above. *****



GB745/206-500-5 with GB946 BLEED PUMP PROCEDURE:



- ⚠ WARNING:** Keep oil control valve on the GB946 bleed pump in the “OFF” position unless it is being used to bleed the tool or when the hose adapter is placed into a collection container for bleeding. Failure to do so will result in oil shooting from the adapter at 200 psi. (13.8 bar) causing great personal injury.
- ⚠ WARNING:** Use CAUTION when removing bleed screws and stat-o-seals, Hydraulic oil may be under pressure.
- ⚠ WARNING:** Read and understand ALL warnings and cautions in GB946 powerunit manual and on pgs. 11 - 14 before proceeding.

Note:

- GB946 bleed pump and Regulator (756605) are required. (Sold Separately).

OVERHAUL BLEED: (Make sure oil control valve on the GB946 is turned to the “OFF” position). (See GB946 manual for more information).

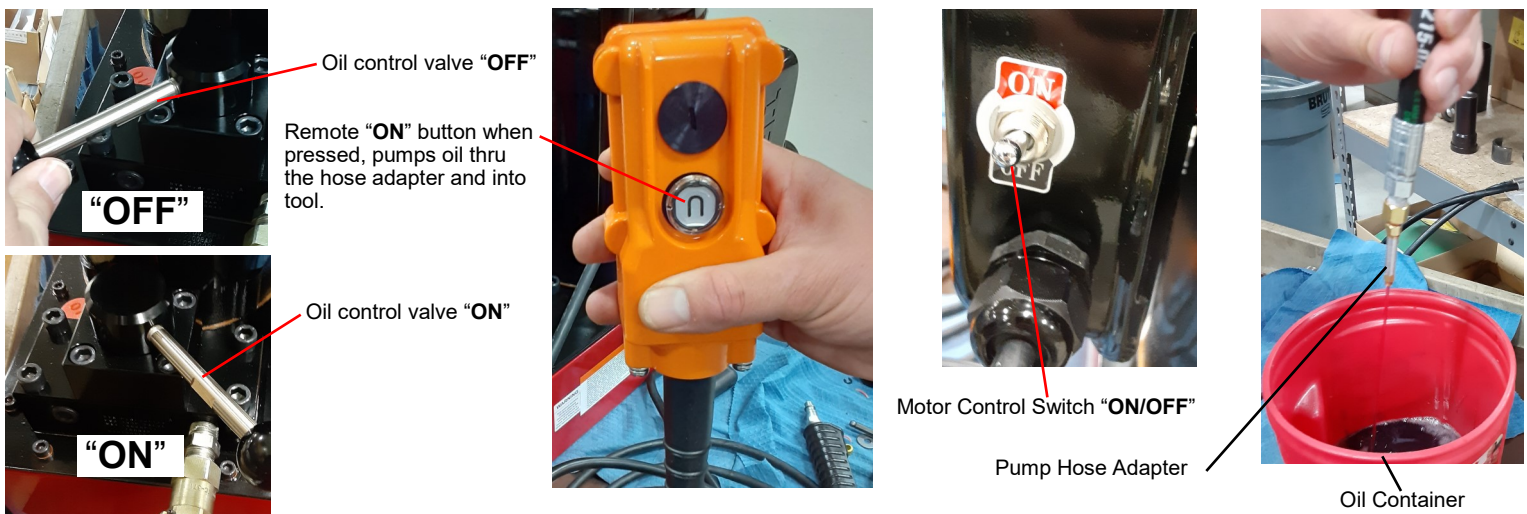
1. Make sure the air piston assembly (744121) is all the way down then fill the oil passage.
2. Remove (2X) button head cap screws (402482) and (2X) stat-o-seals (S572) from head cylinder (204300).
3. Ensure piston assembly (206129) is in forward position (.250 ±.005) (19.5mm ±.127mm) (Dim “A”). See image on pg. 14.

Caution: Be aware oil may eject forcefully from open bleeder holes when pushing piston forward.

4. Attach and torque the button head cap screw and stat-o-seal to hole “R” on the head cylinder (204300) to 35 inch lbs. (3.95 Nm) then attach the manifold-handle (745303) to the handle assembly (744129).
5. Remove the button head cap screw and stat-o-seal from the hole “P” on the manifold-handle (745303) and attach the pump hose adapter to hole “P” on the manifold-handle (745303).
 - 5a. Plug the GB946 powerunit into a 110V electrical source and turn the oil control valve and motor control switch “ON”. (See images below).
6. Hold head cylinder so hole “P” faces down and over your oil collection container.
 - 6a. Press the separate “ON” button (located on the remote) and run pump for 5 - 10 seconds then release the button and turn the oil control valve to the “OFF” position.
7. Re-attach the button head cap screw and stat-o-seal to hole “P” on head cylinder.
 - 7a. Remove the pump hose adapter and re-attach the button head cap screw and stat-o-seal to hole “P” on the manifold-handle.
 - 7b. Torque screws to 35 inch lbs. (3.95 Nm). Do not over tighten.
8. Connect regulator (756605) to airline and connect tool to air.
 - 8a. Cycle piston (206129) to rear position (.250 ±.005) (6.4mm ±.127mm) (Dim “B”). See image on pg. 14.
 - 8b. Disconnect air from tool.

***** If piston does not check (.250 ±.005) (6.4mm ±.127mm) (Dim “B”) in the rear position, repeat steps 1 - 8 above. *****

*****CONTINUE #9 THRU #14 ON NEXT PAGE*****





- ⚠ WARNING:** Keep oil control valve on the GB946 bleed pump in the “OFF” position unless it is being used to bleed the tool or when the hose adapter is placed into a collection container for bleeding. Failure to do so will result in oil shooting from the adapter at 200 psi. (13.8 bar) causing great personal injury.
- ⚠ WARNING:** Use CAUTION when removing bleed screws and stat-o-seals, Hydraulic oil may be under pressure.
- ⚠ WARNING:** Read and understand ALL warnings and cautions in GB946 powerunit manual and on pgs. 11 - 14 before proceeding.

Note:

- GB946 bleed pump and Regulator (756605) are required. (Sold Separately).

OVERHAUL BLEED: (Make sure oil control valve on the GB946 is turned to the “OFF” position). (See GB946 manual for more information).

9. Remove button head cap screw and stat-o-seal from hole “R” on head cylinder and hole “R” on manifold-handle.
10. Attach the pump hose adapter to hole “R” on manifold handle.
11. Place head cylinder over your oil collection container with hole “R” pointed down and turn the oil control valve and motor control switch to “ON” position. (See images below).
12. Run pump for 5 - 10 seconds by pressing the separate “ON” button (located on the remote).
 - 12a. Release the remote “On” button and turn the oil control valve to the “OFF” position.
13. Re-attach the button head cap screw and stat-o-seal to hole “R” on head cylinder.
 - 13a. Remove the pump hose adapter from hole “R” and re-attach the button head cap screw and stat-o-seal to hole “R”.
 - 13b. Torque screws to 35 inch lbs. (3.95 Nm). Do not over tighten.
14. Ensure regulator (756605) is still attached and connect tool to air.
 - 14a. Slowly loosen button head cap screw on hole marked “R” on head cylinder to allow excess oil to drain.
 - 14b. After excess oil has drained, torque screw to 35 inch lbs. (3.95 Nm). Do not over tighten.
 - 14c. Measure stroke (.500 ±.010) (12.7mm ±.25mm).

***** If piston does not check (.250 ±.005) (6.4mm ±.127mm) (Dim “A”) in the rear position, repeat steps 9 - 14 above. *****





- ⚠ WARNING:** Only qualified and trained personnel shall perform overhaul.
- ⚠ WARNING:** Personnel must read and understand all warnings and cautions.
- ⚠ WARNING:** Tool must be maintained in a safe working condition at all times and examined on a daily basis for damage or wear. Any repair must be done by qualified personnel trained on Gage Bilt procedures.
- ⚠ WARNING:** Disconnect tool from its power source before performing overhaul. Severe personal injury may occur if power source is not disconnected.
- ⚠ WARNING:** Excessive contact with hydraulic oil and lubricants must be avoided. (See safety data sheet documents for all applicable materials).
- ⚠ WARNING:** When operating, repairing or overhauling tool, wear approved eye protection. Do not look in front of tool or rear of tool when installing fastener.
- ⚠ WARNING:** Use only Gage Bilt hydraulic hoses and couplings, or equivalent, rated for 10,000 psi. (689.5 bar) working pressure.
- ⚠ WARNING:** Ensure air hose is securely connected to avoid possible hose whipping. (Air Actuated Tools only).
- ⚠ WARNING:** Depress actuator assembly-air (704130) and disconnect from air, with the piston in the rear position, before overhaul. Severe personal injury may occur if air hose is not disconnected. **USE CAUTION** when forcing piston rod assembly downward with head cylinder removed. Hydraulic oil will eject forcibly from handle assembly.

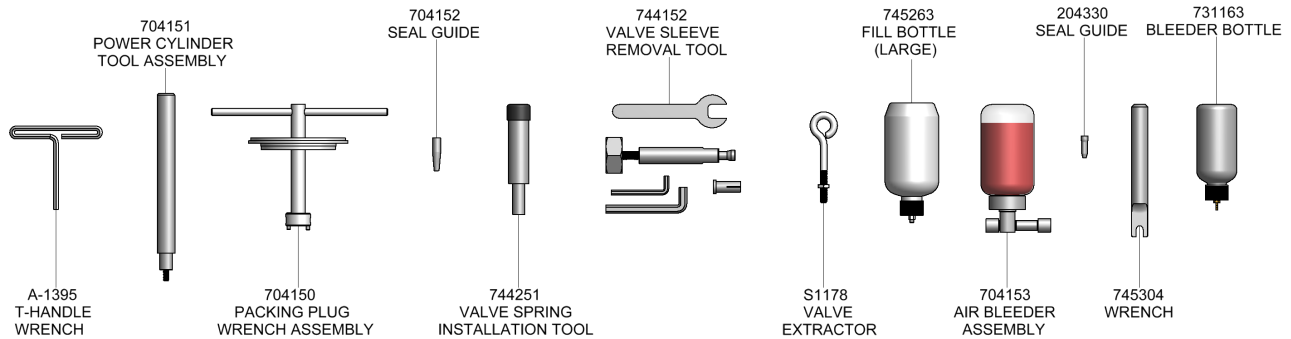
Note:

- Dispose of hydraulic oil in accordance with manufacture safety datasheet.
- All tool materials are recyclable except rubber o’rings, seals and wipers.
- It is recommended that service tool kit (GB745/204TK-1) (see below) be used to facilitate overhaul.
- *Use of SERVICE KIT (745214), which contains a complete set of o’rings, back-up rings, screws, washers and gasket, can achieve a complete overhaul.*

Perform overhaul in a clean, well lit area using care not to scratch or nick any smooth surface that comes in contact with an o’ring. Use of Lubriplate® (Gage Bilt part no. 402723) or other lubricant is recommended during reassembly to prevent tearing or distorting of o’rings.

The disassembly and re-assembly procedure can be accomplished by utilizing the following instructions and parts list on pgs. 20 - 23. Use extreme care during disassembly and re-assembly not to mar or nick any smooth surface that comes in contact with seals. Before installing seals, always apply a good lubricant, such as Lubriplate, to the surfaces.

Clean parts in mineral spirits or other o’ring compatible solvent being sure to clean o’ring grooves. Inspect components for scoring, excessive wear or damage.



GB745/204TK-1 Service Tool Kit

| Part No. | Description |
|----------|--------------------------------|
| A-1395 | 3" T-Handle Wrench |
| 704151 | Power Cylinder Tool Assembly |
| 704150 | Packing Plug Wrench Assembly |
| 704152 | Seal Guide |
| 744251 | Valve Spring Installation Tool |
| 744152 | Valve Sleeve Removal Tool |
| S1178 | Valve Extractor |
| 745263 | Fill Bottle (Large) |
| 704153 | Air Bleeder Assembly |
| 204330 | Seal Guide |
| 745304 | Wrench |
| 731163 | Bleeder Bottle |

TOOL DISPOSAL

1. When tool life is met, drain hydraulic oil from tool and dispose of the hydraulic oil in accordance with the safety datasheet.
2. Disassemble tool and remove all rubber o’rings, seals, wipers and hydraulic hoses. All tool materials are recyclable except rubber o’rings, seals, wipers and hydraulic hoses. Dispose of rubber materials in accordance with the material safety datasheet.



⚠ WARNING: Disconnect tool from its air source before disassembly.

HEAD

Disconnect hydraulic hoses (A-1668) and air line (204122) from manifold-handle (745303) and drain hoses. Push piston assembly (206129) back to rear of the cylinder (204300) to empty all oil from the tool. Push piston assembly (206129) to the front of the cylinder (204300).

Unscrew socket head cap screw (206118) from retaining ring (206117) use a spanner wrench to remove retaining ring. Push piston assembly (206129) back until cylinder cap assembly (206115) falls out of cylinder (204300). Push piston assembly (206129) out the rear of the cylinder (204300). Using a small blunt object, remove o-rings and back-up rings from components.

Clean parts mineral spirits or other o-ring compatible solvent being sure to clean o-ring grooves. Inspect components for scoring, excessive wear or damage.

Reassembly sequence is opposite of disassembly. Coat hose fitting threads with a non-hardening Teflon® thread compound such as Slic-tite® (GAGE BILT part no. 403237).

HANDLE

To inspect air cylinder bore, remove base cover (744124). Any further disassembly will require removal of the manifold-handle (745303).

For complete disassembly.

1. Remove base cover (744124).
2. Holding tool upright, remove four button-head cap screws (A-928). Lift manifold-handle (745303) from handle assembly (744129) and set aside o-ring (S832) and gasket (745124).
3. Empty all hydraulic oil into an approved container and dispose of in accordance with the material safety datasheet.
4. Place T-Handle wrench (A-1395) down into top of power cylinder (745345) and into the hex of piston rod assembly (745347). While holding the T-Handle wrench (A-1395), remove flexlock nut (400559) using a 7/16" socket wrench or an adjustable wrench. Still holding T-Handle wrench (A-1395), remove air piston assembly (744121) using power cylinder tool assembly (704151).
5. When air piston assembly (744121) is completely free from piston rod assembly (745347), insert threaded end of power cylinder tool assembly (704151) into bottom of air cylinder and remove air piston assembly (744121).
6. After removal of air piston assembly (744121), slide piston rod assembly (745347) back up to the end of its travel. Using packing plug wrench assembly (704150) remove packing plug (744118).
7. With packing plug (744118) removed, power cylinder (745345) can be removed by pushing on power cylinder tool assembly (704151) when inserted into top of power cylinder (745345).

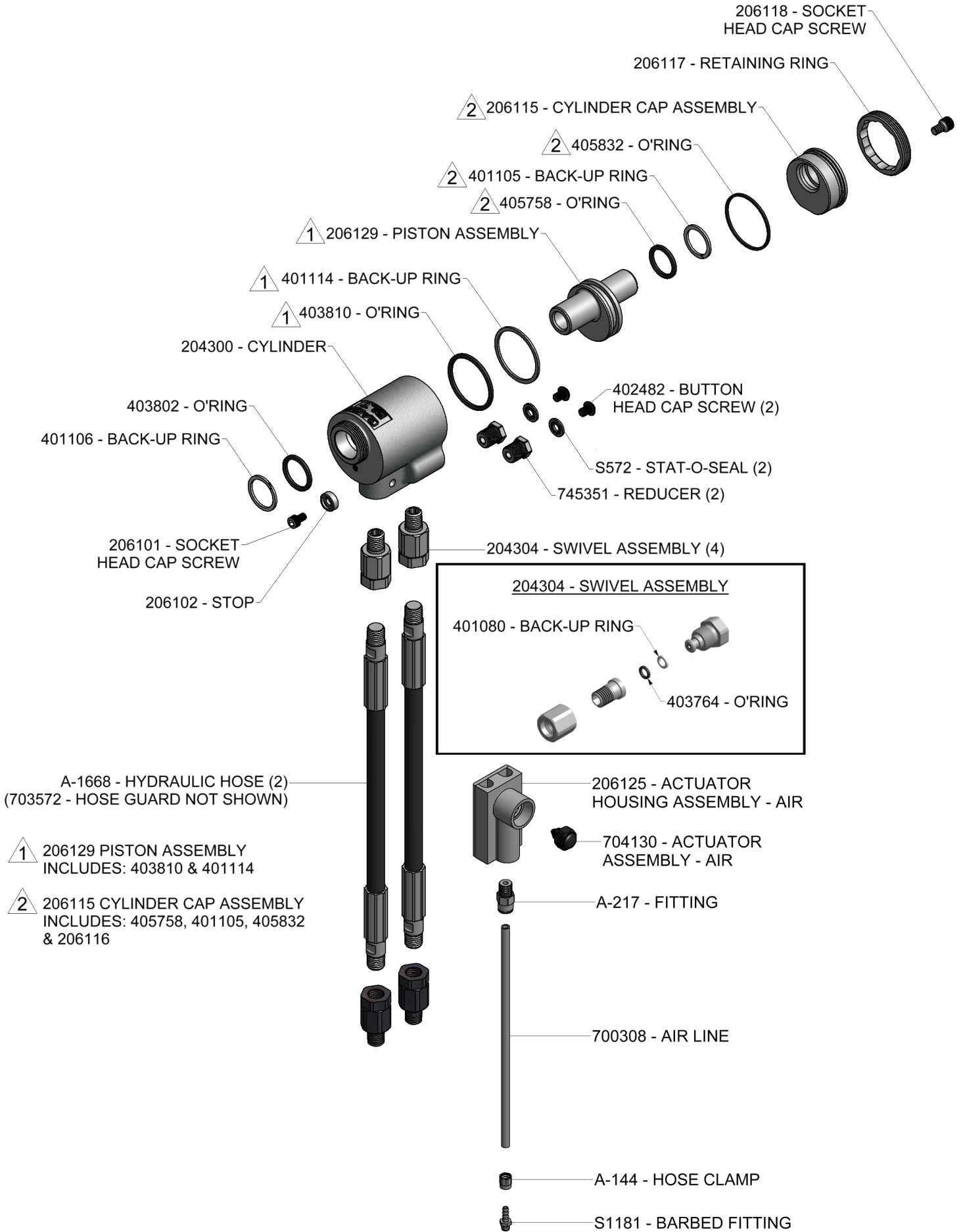
To reassemble the handle assembly (744129).

1. Reverse the above procedure, being certain that all o-rings are properly lubricated before installation. Torque packing plug (744118) to 45 foot lbs. (61 Nm).
2. Attach the seal guide (704152) to the piston rod assembly (745347) and tap the piston rod assembly (745347) through the packing plug (744118).
3. Attach air piston assembly (744121) and flexlock nut (400559) to piston rod assembly (745347). Tighten flexlock nut (400559) to piston rod assembly. Torque flexlock nut to 40 inch lbs. (4.52 Nm).
4. With the piston rod in the down position, fill oil passage on top of handle assembly (744129) with automatic transmission oil, Dexron® III or equivalent. When looking at top of handle assembly (744129) the oil passage is the hole that has a counterbore for (S832) o-ring.
5. Replace gasket (745124) and o-ring (S832), just prior to replacing cylinder (204300). Torque all screws to manual specifications. (See Filling & Bleeding procedures pgs. 11 - 14) & (See torque specs. pg. 10).

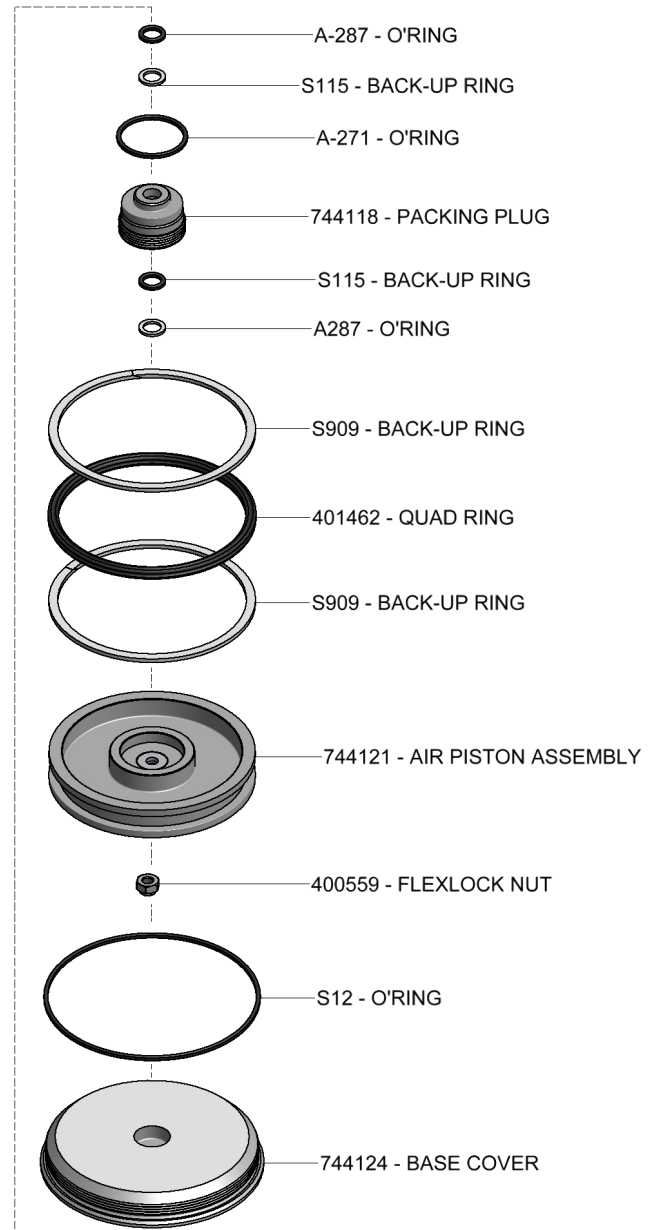
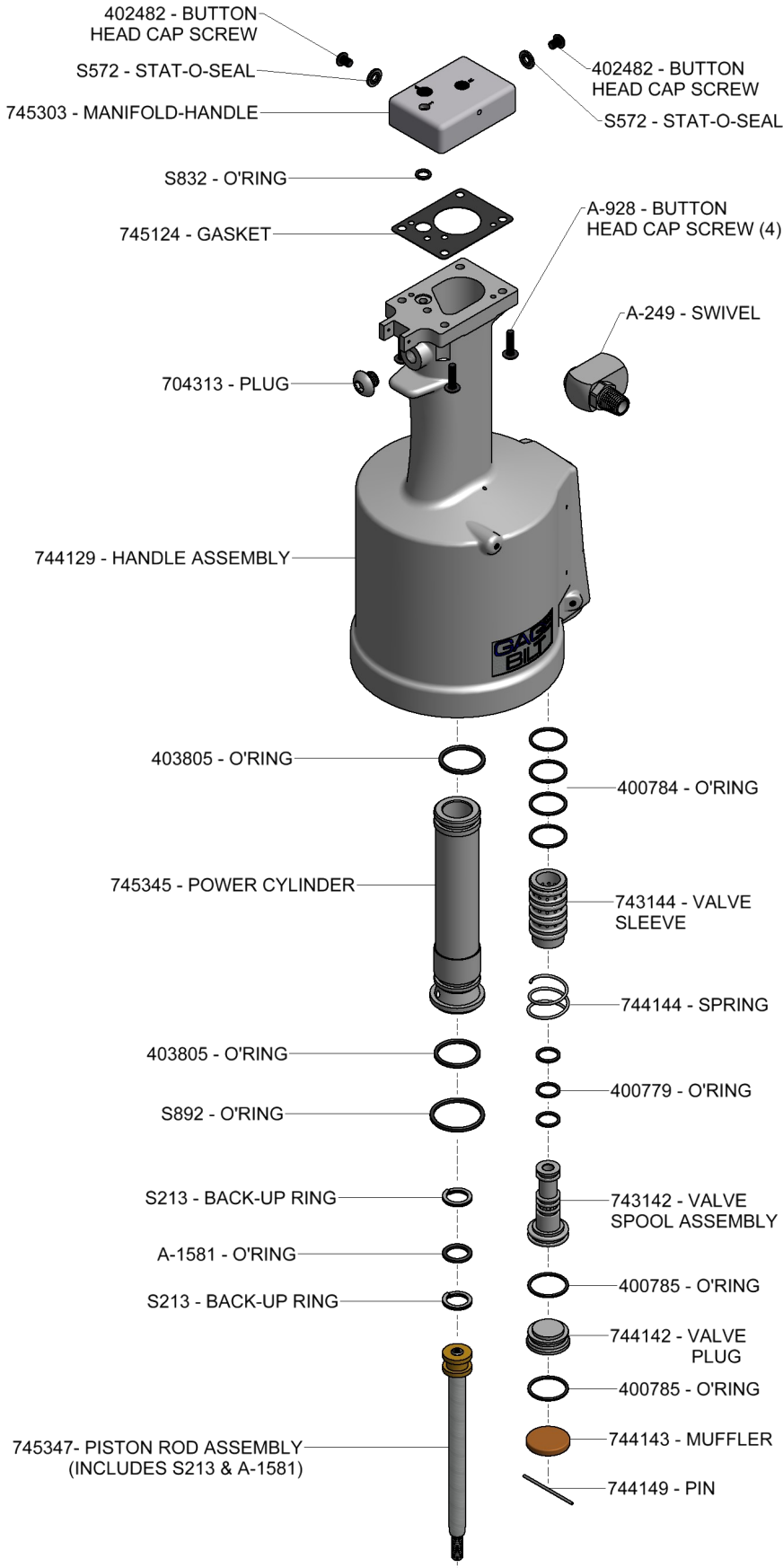
AIR VALVE

1. Remove pin (744149) and muffler (744143).
2. Insert valve extractor (S1178) into end of valve plug (744142) and pull it out.
3. Using the same procedure, pull out valve spool assembly (743142).
4. It should never be necessary to remove valve sleeve (743144) unless the ports in the valve sleeve (743144) are plugged from contaminated air. If ports are plugged, use needle nose pliers to grasp end of spring (744144), turning clockwise and pulling to dislodge from groove in casting. Valve spring installation tool (744251) will facilitate the proper installation of the spring (744144).
5. Valve sleeve (743144) can be pulled out using valve sleeve removal tool (744152).

PARTS LIST

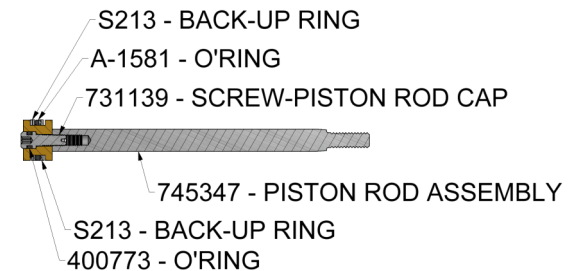


PARTS LIST



WARNING:

This tool incorporates a patented hydraulic relief valve. When overhauling tool, o-ring (A-1581) and back-up ring (S213) must be replaced. Failure to do so could result in SEVERE PERSONAL INJURY!



DEXRON® III OIL SAFETY DATA

FIRST AID MEASURES

Eye: No specific first aid measures are required. As a precaution, remove contact lenses, if worn, and flush eyes with water.

Skin: No specific first aid measures are required. As a precaution, remove clothing and shoes if contaminated. To remove the material from skin, use soap and water. Discard contaminated clothing and shoes or thoroughly clean before reuse.

Ingestion: No specific first aid measures are required. Do not induce vomiting. As a precaution, get medical advice.

Inhalation: No specific first aid measures are required. If exposed to excessive levels of material in the air, move the exposed person to fresh air. Get medical attention if coughing or respiratory discomfort occurs.

Note to Physicians: In an accident involving high-pressure equipment, this product may be injected under the skin. Such an accident may result in a small, sometimes bloodless, puncture wound. However, because of its driving force, material injected into a fingertip can be deposited into the palm of the hand. Within 24 hours, there is usually a great deal of swelling, discoloration, and intense throbbing pain. Immediate treatment at a surgical emergency center is recommended.

FIRE

Leaks/ruptures in high pressure system using materials of this type can create a fire hazard when in the vicinity of ignition sources (e.g. open flame, pilot lights, sparks, or electric arcs).

FLAMMABLE PROPERTIES:

Flashpoint: (Cleveland Open Cup) 178 °C (352 °F) Minimum

EXTINGUISHING MEDIA: Use water fog, foam, dry chemical or carbon dioxide (CO₂) to extinguish flames.

PROTECTION OF FIRE FIGHTERS:

Fire Fighting Instructions: This material will burn although it is not easily ignited. See Section 7 for proper handling and storage. For fires involving this material, do not enter any enclosed or confined fire space without proper protective equipment, including self-contained breathing apparatus.

Combustion Products: Highly dependent on combustion conditions. A complex mixture of airborne solids, liquids, and gases including carbon monoxide, carbon dioxide, and unidentified organic compounds will be evolved when this material undergoes combustion.

ACCIDENTAL RELEASE MEASURES

Protective Measures: Eliminate all sources of ignition in vicinity of spilled material.

Spill Management: Stop the source of the release if you can do it without risk. Contain release to prevent further contamination of soil, surface water or groundwater. Clean up spill as soon as possible. Use appropriate techniques such as applying non-combustible absorbent materials or pumping. Where feasible and appropriate, remove contaminated soil. Place contaminated materials in disposable containers and dispose of in a manner consistent with applicable regulations.

ECOLOGICAL INFORMATION

Waste disposal: In accordance with all environmental regulations applicable to your area.

Spillage: Prevent entry into drains, sewers and water course. Soak up with diatomaceous earth or other inert material. Store in appropriate container for disposal.

Ecotoxicity: This material is expected to be harmful to aquatic organisms and may cause long-term adverse effects in the aquatic environment. The ecotoxicity hazard is based on an evaluation of data for the components or a similar material.

HANDLING

Precautionary Measures: DO NOT USE IN HIGH PRESSURE SYSTEMS in the vicinity of flames, sparks and hot surfaces. Use only in well ventilated areas. Keep container closed. Keep out of the reach of children.

General Handling Information: Avoid contaminating soil or releasing this material into sewage and drainage systems and bodies of water.

Static Hazard: Electrostatic charge may accumulate and create a hazardous condition when handling this material. To minimize this hazard, bonding and grounding may be necessary but may not, by themselves, be sufficient. Review all operations which have the potential of generating and accumulating an electrostatic charge and/or a flammable atmosphere (including tank and container filling, splash filling, tank cleaning, sampling, gauging, switch loading, filtering, mixing, agitation, and vacuum truck operations) and use appropriate mitigating procedures.

DISPOSAL CONSIDERATIONS

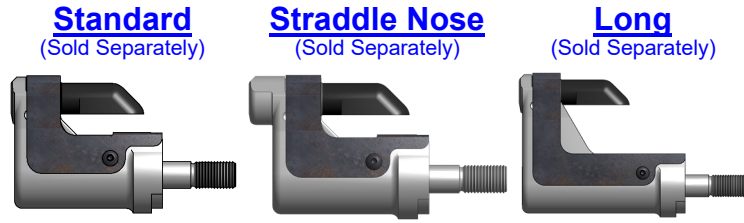
Use material for its intended purpose or recycle if possible. Oil collection services are available for used oil recycling or disposal. Place contaminated materials in containers and dispose of in a manner consistent with applicable regulations.

GB745/206-500-5 ACCESSORIES



Approved for use on Gage Bilt CE installation tools and/or other manufacturer's CE approved tools of similar design.
(Sold Separately)

GB745/206-500-5 - SELECTION CHART



| FASTENER | DIA. | STANDARD | STRADDLE NOSE (1) | LONG |
|-----------------------------------------------------------------------------------------------------------------------------------------------------------------------------------------|---------------------------------|------------------------------------------------------------------|--------------------------------------------------------------|------------------------------------------------------------------|
| NAS and GP® SHEAR/TENSION LOCKBOLTS | 5/32" | NAST05-25OSSG | NAST05-30OSSG | NAST05-34OSSG |
| BACB30TY BACB30UA BACB30TZ BACB30UB BACB30DY BACB30CX BACB30DX BACB30CF BACB30GO BACB30GY | 3/16" | NASS05-25OSSG | NASS05-30OSSG | NASS05-34OSSG |
| BACB30GW | 1/4" | NAS06-25OSSG | NAS06-30OSSG | NAS06-34OSSG |
| MGP® (MILLIMETER) LOCKBOLT | 4mm 5mm 6mm | MGP4-25OSSG MGP5-25OSSG MGP6-25OSSG | MGP4-30OSSG MGP5-30OSSG MGP6-30OSSG | MGP4-34OSSG MGP5-34OSSG MGP6-34OSSG |
| LGP® LOCKBOLT | | | | |
| LGPL2SC-V BACB30VM LGPL18SC-V BACB30XT LGPL4SC-V ABS0548 LGPL2SP-V BACB30VN LGPL4SP-V ASNA2392 LGPL8SC-V BACB30WD LGPL9SC-V BACB30WB LGPL9SP-V BACB30VY BACB31N | 5/32" 3/16" 7/32" 1/4" | LGP05-25OSSG LGP06-25OSSG LGP07-25OSSG LGP08-25OSSG | LGP05-30OSSG LGP06-30OSSG LGP07-30OSSG LGP08-30OSSG | LGP05-34OSSG LGP06-34OSSG LGP07-34OSSG LGP08-34OSSG |
| MLGP® (MILLIMETER) LOCKBOLT | 4mm 5mm 6mm | MLGP4-25OSSG MLGP5-25OSSG MLGP6-25OSSG | MLGP4-30OSSG MLGP5-30OSSG MLGP6-30OSSG | MLGP4-34OSSG MLGP5-34OSSG MLGP6-34OSSG |
| NAS1900 S & U SERIES UNIMATIC® BLIND RIVET (SINGLE ACTION) WITH OR W/O DRIVE WASHER | 1/8" 5/32" 3/16" 1/4" | SMLS04-27OSSG SMLS05-27OSSG SMLS06-27OSSG SMLS08-27OSSG | | SMLS04-37OSSG SMLS05-37OSSG SMLS06-37OSSG SMLS08-37OSSG |
| MS90353S & U / MS90354S & U MS21140S & U / MS21141S & U MAXIBOLT®, BACB30YY, YU, & YT CR7000 SERIES BLIND BOLT (SINGLE ACTION) WITH OR W/O DRIVE WASHER | 5/32" 3/16" 1/4" | SB05-27OSSG SB06-27OSSG SB08-27OSSG | | SB05-37OSSG SB06-37OSSG SB08-37OSSG |
| EN6122 & UAB130-EU EN6127 & UAB6127-EU EN6128 & UAB100-EU EN6129 & UABP-EU MAXIBOLT® PLUS | 3/16" 1/4" | UAB06-27OSSG UAB08-27OSSG | | UAB06-37OSSG UAB08-37OSSG |
| CHERRY MAX®, CHERRY MAX® 'AB', (FOR 1/4" ALUMINUM) CHERRY MAX® 'AB' USE SMLS08) MBC® LOCK CREATOR BACR15FR/FP, BACR15GF/GK | 1/4" | 08MAX-27OSSG | | 08MAX-37OSSG |
| "A" CODE NAS1398A, NAS1399A NAS1738A, NAS1739A | 1/8" 5/32" 3/16" 1/4" | 4A-27OSSG 5A-27OSSG 6A-27OSSG SMLS08-27OSSG | | 4A-37OSSG 5A-37OSSG 6A-37OSSG SMLS08-37OSSG |
| ASP® ASP 2, ASP PF, ASP 2 F, ASP 2 LC, ASP 4 FF, ASP FF, ASP F, ASP-LC and MAF | 13/64" 17/64" 21/64" | ASP06-27OSSG ASP08-27OSSG ASP10-27OSSG | | ASP06-37OSSG ASP08-37OSSG ASP10-37OSSG |
| STANDARD MBC® NAS1719, NAS1720, NAS1721 | 1/8" 5/32" 3/16" | MBC04-27OSSG MBC05-27OSSG MBC06-27OSSG | | MBC04-37OSSG MBC05-37OSSG MBC06-37OSSG |
| GROUND STUD, M83454 & BACS53B | 8/32" 10/32" | GS8-32OSSG GS10-32OSSG | | GS8-42OSSG SMLS08-37OSSG |

GP®, MGP®, LGP®, MLGP®, UNIMATIC® AND ASP® ARE REGISTERED TRADEMARKS OF HOWMET AEROSPACE. MAXI-BOLT® AND MBC® ARE REGISTERED TRADEMARKS OF CHERRY AEROSPACE FASTENERS.

GAGE BILT CERTIFIES THE GB745/206-500 WILL INSTALL THE ABOVE FASTENERS

| |
|--------------------------------------------------------------|
| 1) -30 STRADDLE NOSES ARE DESIGNED TO REACH OVER THE COLLAR. |
| 2) BACS53B -10 ONLY. |
| 3) 110 PSI MAY BE REQUIRED. |

NOTE: THE LAST 2 DIGITS OF THE NOSE ASSEMBLY REPRESENTS THE LENGTH THE NOSE

EXTENDS FROM THE TOOL I.E. -25 = 2.5 inches

Rev. 4/26

XX-25OSSG, XX-30OSSG, XX-34OSSG, Offset Nose Assemblies are supplied with a one-piece Super Grip Jaw Assembly for dry applications. For wet applications where sealant is used, XX-25OS, XX-30OS, XX-34OS Offset Nose Assemblies may be ordered. The "OS" designates that the Offset Nose Assembly will come with loose Jaws, Follower, Spring and Locator for easier cleaning.

Please note *this only applies* to cartridge style Offset Noses listed in chart above.

Accessories Cont.



Approved for use on Gage Bilt CE installation tools and/or other manufacturer's CE approved tools of similar design.
(Sold Separately)

Adapter Assembly

#206751

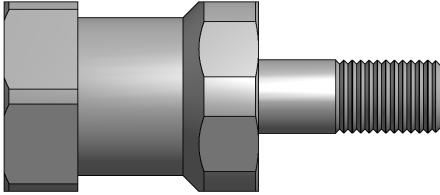
Adapts:

GAGE BILT, CHERRY® and HUCK®

3/4" Nose Assemblies to:

GB745/206-500 Installation Tool

(Sold Separately)



GB946 FILL/BLEED PUMP
For quick and easy bleeding of tools
Recommended for high production facilities
(Sold Separately)



Tool Stroke Depth Gage

#A-1935

(Sold Separately)



Image may not reflect actual gage

Catcher Bag-Stem

#756610 (Heavy Duty)

(Sold Separately)



Catcher Bag-Stem

#704214 (Light Duty)

(Sold Separately)



Fill Bottle

#745263

(Sold Separately)



Air Bleeder Assembly

#704153

(Sold Separately)



Split Riveter Tool Backpacks

For 5ft hose Split System Tools.

(Sold Separately)

SPLIT-SYSTEM TOOL BACKPACKS

- Backpack fits any split-system tool
- Reduces weight of tool by up to 70%
- Reduces User Fatigue
- Increases Productivity
- Increases User Mobility
- Ergonomic
- Comfortable

INSIDE VIEW

OPTIONAL Vacuum System for FOD Control



This page intentionally left blank

Riveter Kits Available

(Sold Separately)



Gage Bilt offers a wide selection of standard and custom kits tailored to your needs.
Contact us for more information.



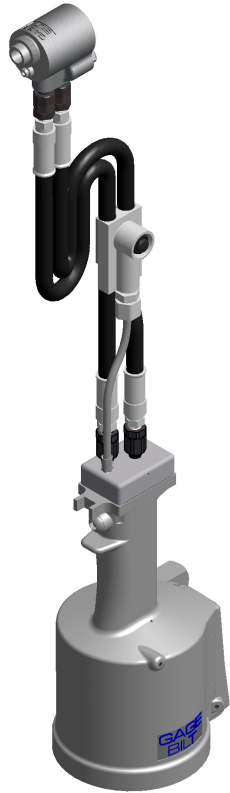
Alternative Styles

(Sold Separately)



GB745/204

Stroke - .500" (12.7 mm)
Hand held weight -1.5 lbs. (.68 kg)
Pull load 5,600 (24.9 kN)



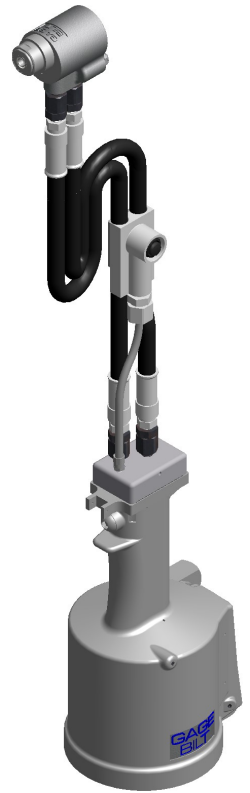
GB745/205

Stroke - .550" (14.0 mm)
Hand held weight - 2.0 lbs. (.91 kg)
Pull load 7,085 (31.5 kN)



GB745/206-500 SERIES

Stroke - .500" (12.7 mm)
Hand held weight - 2.0 lbs. (.91 kg)
Pull load - 4,800 (21.4 kN)



GB745/708LGP

Stroke - .500" (12.7 mm)
Hand held weight - 2.0 lbs. (.91 kg)
Pull load 5,600 (24.9 kN)

DEXRON® IS A REGISTERED TRADEMARK OF GENERAL MOTORS CORPORATION. TEFLON® IS A REGISTERED TRADEMARK OF E.I. DUPONT DE NEMOURS & CO. LUBRIPLATE® IS A REGISTERED TRADEMARK OF FISKE BROTHERS REFINING CO. SLIC-TITE® IS A REGISTERED TRADEMARK OF LA-CO INDUSTRIES INC. LOCTITE® IS A REGISTERED TRADEMARK OF HENKEL CORPORATION. CHERRY®, CHERRYMAX® & CHERRYLOCK® ARE REGISTERED TRADEMARKS OF CHERRY AEROSPACE FASTENERS. HUCK® IS A REGISTERED TRADEMARK OF HOWMET AEROSPACE.