

GAGE BILT

RIVET & LOCKBOLT TOOLS

44766 Centre Ct. Clinton Twp. MI 48038 USA

+1 586. 226.1500



+1 586. 226.1505

solutions@gagebilt.com

www.gagebilt.com

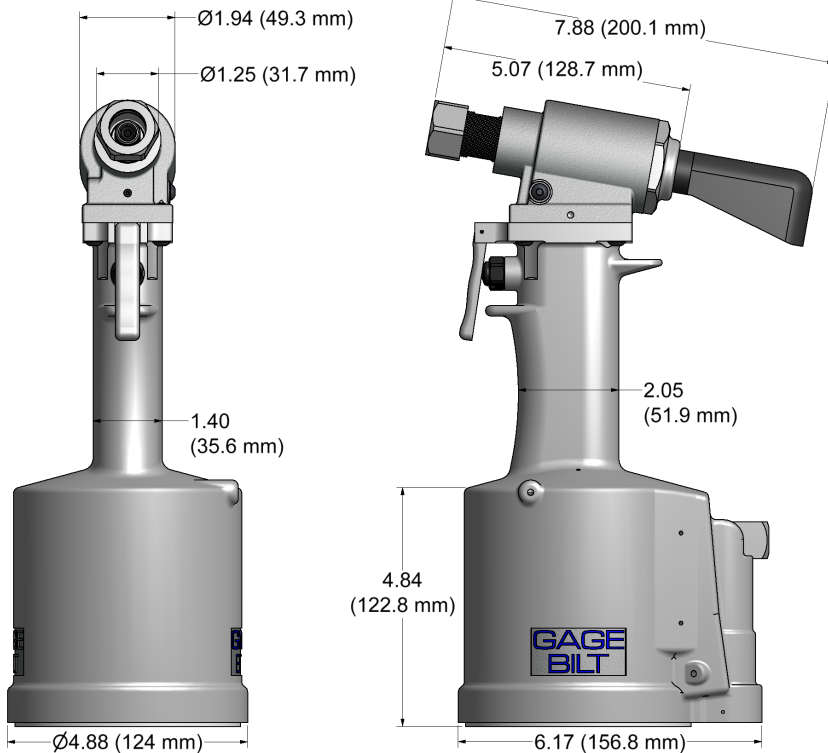
GB714 PNEUDRAULIC INSTALLATION TOOL SERIES

BLIND BOLTS

MS90353S & U / MS90354S & U MS21140S & U / MS21141S & U MAXI-BOLT®, BACB30YY, YU, & YT BLIND BOLT (SINGLE ACTION) WITH OR W/O DRIVE WASHER	1/8"-1/4" ANY MATERIAL	
EN6122 & UAB130-EU EN6127 & UAB6127-EU EN6128 & UAB100-EU EN6129 & UABP-EU MAXIBOLT®-PLUS	5/32"-1/4" ANY MATERIAL	

GB714

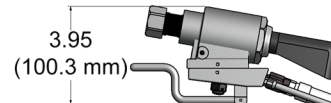
Stroke - .590" (14.9mm)
Hand held weight - 6.50 lbs. (2.9 kg)
Entire tool weight - 6.50 lbs. (2.9 kg)
Pull load - 6,400 (28.4 kN)



GB714SH

Stroke - .590" (14.9mm)
Hand held weight - 2.50 lbs. (1.1 kg)
Entire tool weight - 7.50 lbs. (3.4 kg)
Pull load - 6,400 (28.4 kN)
Standard Hyd. Hose Length - 8ft (2.4m)

*5ft Hyd. Hoses are recommended with use of Backpack
Additional custom lengths are available.*



GB714SR

Stroke - .590" (14.9mm)
Hand held weight - 2.00 lbs. (0.9 kg)
Entire tool weight - 7.00 lbs. (3.2 kg)
Pull load - 6,400 (28.4 kN)
Standard Hyd. Hose Length - 3ft (.91m)

*5ft Hyd. Hoses are recommended with use of Backpack
Additional custom lengths are available.*



The **GB714** series are pneumatic-hydraulic installation tools, designed specifically for the efficient installation of any style 1/8" - 1/4" blind bolt. The tools install many other blind rivet and lockbolt fasteners listed on the nose assembly selection chart (see back of flyer). They can be operated in any position and have a rated pull load of 6,200 (27.57 kN) pounds with 90 psi (6.2 bar) air pressure at the air inlet.

The **GB714SH** and **GB714SR** installation tools offer a unique "split" system providing the operator with an ergonomic tool with reduced hand held weight. The **GB714SH** comes with 8 feet (2.4 m) of hose and the **GB714SR** comes with 3 feet (.91 m) of hose. Use with our "NEW" Split-System Backpacks to increase user mobility, ergonomics and productivity. Contact GAGE BILT for more information.

The **GB714** series tools operate on 90 to 100 psi. (6.2 - 6.9 bar) of air pressure, with 90 psi. (6.2 bar) providing the maximum efficiency. At 90 psi. (6.2 bar) of air pressure, the **GB714** series does not exceed 81.5 dB(A) and consumes .30 SCF/cycle (8.50 L/cycle). The air inlet is provided with 1/4 - 18 female pipe thread to accept the users air hose fitting.

**NOSE ASSEMBLIES ARE NOT FURNISHED WITH
TOOL AND MUST BE ORDERED SEPARATELY**





GB714-ACCESSORIES

Approved for use on Gage Bilt CE installation tools and/or other manufacturer's CE approved tools of similar design. (Sold Separately)



ACCESSORIES (Sold Separately)

Stroke Limiter #714153

Required with all offset OSSG nose assemblies when used with 751206-1 adapter on GB714 tool. See Chart. (Sold Separately)



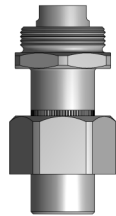
Adapter Assembly #713206

Adapts all "OSSG" offset series nose assemblies to GB714 installation tool. No stroke limiter required. (Sold Separately)



Optional Adapter Assembly #751206-1

Required with 714153 stroke limiter to adapt all "OSSG" nose assemblies to the GB714 installation tool. (Sold Separately)



Catcher Bag-Stem Catcher Bag-Stem #704214 (Light Duty) #756610 (Heavy Duty) (Sold Separately)



Grip Gage #GB105093

For NAS, LGP®, GP®, MGP® and MLGP® LOCKBOLTS and BAC8, MS90353/54 & MS21141 blind fasteners (Sold Separately)



Gage Bilt offers a wide selection of standard and custom kits tailored to your needs. Contact us for more information. (Sold Separately)



Air Bleeder Assy #704153 (Sold Separately)



XX-25OSSG, XX-30OSSG, XX-34OSSG Offset Nose Assemblies are supplied with a one-piece Super Grip Jaw Assembly for dry applications.

For wet applications where sealant is used, XX-25OS, XX-30OS, XX-34OS Offset Nose Assemblies may be ordered. The "OS" designates that the Offset Nose Assembly will come with loose Jaws, Follower, Spring and Locator for easier cleaning.

Please note this only applies to cartridge style Offset Noses listed on chart above.

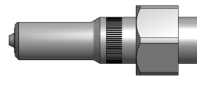
NOSE ASSEMBLY SELECTION CHART



STRAIGHT
(Sold Separately)

***RIGHT ANGLE**
(Sold Separately)

***OFFSET**
(Sold Separately)



FASTENER	DIA.	STRAIGHT	*RIGHT ANGLE	*OFFSET
COMMERCIAL LOCKBOLT, CBL®, AVDEL®	3/16 1/4	LB06-722-20 LB08-722-20	LB06-722-60 LB08-722-60	
MAGNA-GRIP® MULTI-GRIP, MAXLOK® LOCKBOLTS	3/16 1/4	MG06-722-20 MG08-722-20	MG06-722-60 MG08-722-60	
MS90353S & U / MS90354S & U MS2140S & U / MS2141S & U MAXI-BOLT®, BAC830YY, YU, & YT CR7000 SERIES	1/8 5/32	SB04-752C-20 SB05-752C-20 SB05-752C-80	SB04-752C-45 SB05-752C-45 SB05-752C-80	SB04-751C-54RA 2 SB05-751C-54RA 2
BLIND BOLT (SINGLE ACTION) WITH OR W/OUT DRIVE WASHER	3/16 1/4	SB06-752B-20 SB06-752B-80	SB06-752B-45	SB06-751B-54RA 2 SB06-27OSSG
MS90353S & U / MS90354S & U MS2140S & U / MS2141S & U MAXI-BOLT®, BAC830YY, YU, & YT CR7000 SERIES	1/8 5/32	UBB04-752C-20 UBB05-752C-20 UBB05-752C-80	UBB04-752C-45 UBB05-752C-45	UBB04-751C-54RA 2 UBB05-751C-54RA 2
BLIND BOLT (SINGLE ACTION) WITH DRIVE WASHER	3/16 1/4	UBB06-752B-20 UBB06-752B-80	UBB06-752B-45	UBB06-751B-54RA 2 UBB06-27OSSG
EN6122 & UAB130-EU EN6127 & UAB6127-EU EN6128 & UAB100-EU EN6129 & UABP-EU MAXIBOLT® FLUS	5/32 3/16 1/4	UAB568-713-21 3 UAB568-713-61 3		UAB06-713A-58RA UAB06-752B-43OS UAB08-27OSSG
NAS1900 S & U SERIES UNIMATIC® BLIND RIVET (SINGLE ACTION) WITH OR W/OUT DRIVE WASHER	1/8 5/32 3/16 1/4	SMLS04-752C-20 SMLS05-752C-20 SMLS06-752B-20 SMLS08-713-20	SMLS04-752C-45 SMLS05-752C-45 SMLS06-752B-45	SMLS04-751C-54RA 2 SMLS05-751C-54RA 2 SMLS06-751C-54RA 2 SMLS08-713B-58RA
NAS1900 S & U SERIES UNIMATIC® BLIND RIVET (SINGLE ACTION) WITH DRIVE WASHER	1/8 5/32 3/16 1/4	456UBR-751A-21, 1 UBR08-713-20	456UBR-751A-61, 1 UBR08-713-45	456UBR-751D-54RA 1, 2 UBR08-713B-58RA UBR08-27OSSG UBR08-37OSSG
"A" CODE NAS1398A, NAS1399A NAS1738A, NAS1739A	3/32 1/8 5/32 3/16 1/4	3A-352B-25 4A-752C-20 5A-752C-20 6A-752B-20 SMLS08-713-20	4A-752C-45 5A-752C-45 6A-752B-45	3A-751B-54RA 2 4A-751C-54RA 2 5A-751C-54RA 2 6A-751C-54RA 2 SMLS08-713B-58RA
T RIVET®	3/16 1/4	6T-352-21 8T-352-21	6T-352-61 8T-352-61	
MAGNA-LOK®, MAGNA-BULB® & HEMLOK® COUNTERSUNK AND PROTRUDING HEAD SERRATED STEM STRUCTURAL RIVETS	3/16 1/4	MGL06-752A-21 MGL08-752A-21	MGL06-752A-61 MGL08-752A-61	MGL06-713B-58RA MGL08-713B-58RA
MONOBOLT®	3/16 1/4	MB06-752A-21 MB08-752A-21	MB06-752A-61 MB08-752A-61	
CONTAINER BOLT(R 12) HLPP, HLPW, HLPF, HLPB HLFSC & HLFPSM	3/8	HT12-713-20		
TLR RIVET®	1/4	8TLR-352-21 8TLR-352-61		
CHERRYMAX®, CHERRYMAX® 'A', (FOR 1/4" ALUMINUM CHERRYMAX® 'A' USE SMLS08) MBO® LOCK CREATOR BACR15FRFP, BACR15GF/GK	1/8 5/32 3/16	456MAX-751-23 1 08MAX-752B-20	456MAX-751A-61 1 08MAX-752B-45	456MAX-751D-54RA 1, 2 08MAX-713A-58RA 08MAX-27OSSG 08MAX-37OSSG
ASP® ASP 2, ASP PF, ASP 2 F, ASP 2 LC, ASP 4 FF, ASP FF, ASP F, ASP LC and MAF	13/64 17/64 21/64	ASP06-752C-20 ASP08-752B-20 ASP10-713-20	ASP06-752C-45 ASP08-752B-45 ASP10-713-45	ASP06-751B-54RA 2 ASP06-752B-43OS ASP10-27OSSG ASP10-37OSSG
STANDARD MBO® NAS1719, NAS1720 NAS1721	1/8 5/32 3/16	MBC04-752C-20 MBC05-752C-20 MBC06-752B-20	MBC04-752C-45 MBC05-752C-45 MBC06-752B-45	MBC04-751C-54RA 2 MBC05-751C-54RA 2 MBC06-751C-54RA 2 MBC04-752C-43OS MBC05-752C-43OS MBC06-752C-43OS
MBO® LOCK CREATOR NAS1719X(L), NAS1720X(L) NAS1721X(L)	1/8 5/32 3/16	456MAX-751-23 1 456MAX-751A-61 1	456MAX-751A-61 1	456MAX-751D-54RA 1, 2 456MAX-731-43OS 1
GROUND STUD, MB3454 & BACS53B	8/32 10/32	GS8-752C-20 GS10-752B-20	GS8-752C-45 GS10-752B-45	GS8-751C-54RA 2 GS10-752A-54RA 2 GS10-752B-43OS GS10-752B-43OS
MILLIMETER PLUG SEAL	4mm 5mm	5N-751-23 6N-751-23	5N-352-61 6N-352-61	45N-751B-54RA 2 6N-751C-54RA 2 5N-751A-43OS 6N-751A-43OS
POP® OPEN END NAIL RIVET	5/32 3/16 1/4	5N-751-23 6N-751-23 8CN-713-21	5N-352-61 6N-352-61 8CN-713-61	45N-751B-54RA 2 6N-751C-54RA 2 8N-713A-58RA
POP® CLOSED END NAIL RIVET (ALUMINUM MANDREL)	5/32 3/16	5CEA-751-23 6CEA-751-23	5CEA-352-61 6CEA-352-61	5CEA-751B-54RA 2 6CEA-751C-54RA 2 5CEA-751-43OS 6CEA-751-43OS
POP® CLOSED END NAIL RIVET (ALUMINUM MANDREL)	5/32 3/16	5CES-751-23 6CES-751-23	5CES-352-61 6CES-352-61	5CES-751B-54RA 2 6CES-751C-54RA 2 5CES-751-43OS 6CES-751-43OS

T RIVET®, CHERRYMAX®, MAGNABOLT®, AND MBO® ARE REGISTERED TRADEMARKS OF CHERRY AEROSPACE. MONOBOLT®, AVDEL®, HEMLOK®, MAXLOK®, AND TLR® ARE REGISTERED TRADEMARKS OF AVDEL UK LIMITED. ASP®, MAGNA-GRIP®, MAGNA-LOK®, MAGNA-BULB®, AND CBL® ARE REGISTERED TRADEMARKS OF HOWMET AEROSPACE.

GAGE BILT CERTIFIES THE GB714 WILL INSTALL THE ABOVE FASTENERS

- *ALL "OSSG" SERIES NOSES REQUIRE 713206 ADAPTER (NO STROKE LIMITER REQUIRED), OPTIONAL 751206-1 ADAPTER & 714153 STROKE LIMITER.
- 1) INSTALLS 1/8", 5/32" AND 3/16" DIAMETERS.
- 2) THESE NOSES REQUIRE 714152 STROKE LIMITER.
- 3) INSTALLS 5/32", 3/16", AND 1/4"

NOTE: THE LAST 2 DIGITS OF THE NOSE ASSEMBLY REPRESENTS THE LENGTH THE NOSE EXTENDS FROM THE TOOL. LE - 20 = 2.0 INCHES