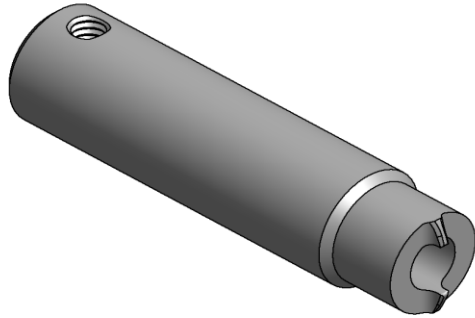


Asp®/Maf Driver



- Select proper fastener for total thickness of material per grip range chart of applicable product standards drawings.
- Prepare hole per applicable product standards drawings.
- Insert pin into prepared hole in assembly. If desired, apply Loctite® compound grade "c" to the pin thread.
- Thread the sleeve onto the pin. Use proper driver, as shown below for diameter of fastener being installed, run-up the sleeve and torque using torque settings shown below. Use a standard industrial torque wrench with 1/4" drive.
- Place lock collar over pintail, and complete fastener installation using proper tool and nose assembly (if needed contact Gage Bilt's sales department for your specific application).
- Shave broken pin end flush with head if required.



10/09 Rev. 9/17

GAGE BILT
MADE in USA

44766 Centre Court Clinton Twp. MI 48038 USA
Ph: +1 (586) 226-1500 Fax: +1 (586) 226-1505
solutions@gagebilt.com / www.gagebilt.com

Asp®/Maf Driver

For Installing:

ASP®

Asp F, 2Asp F, Asp P, 2Asp P,
Maf F, 2Maf F, Maf P and 2Maf F

FASTENER DIAMETER	GAGE BILT NUMBER	*TORQUE SETTINGS
11/64" (-05)	ASP-05	TBD
13/64" (-06)	ASP-06	10-20 INCH POUNDS
17/64" (-08)	ASP-08	20-30 INCH POUNDS
21/64" (-10)	ASP-10	30-40 INCH POUNDS