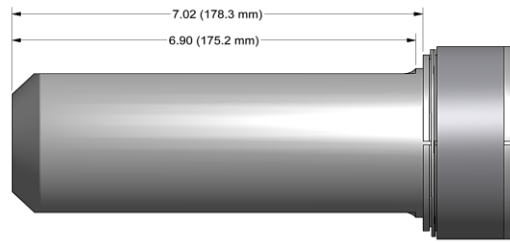
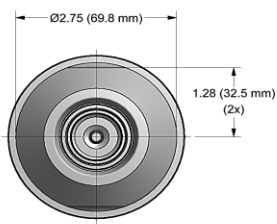
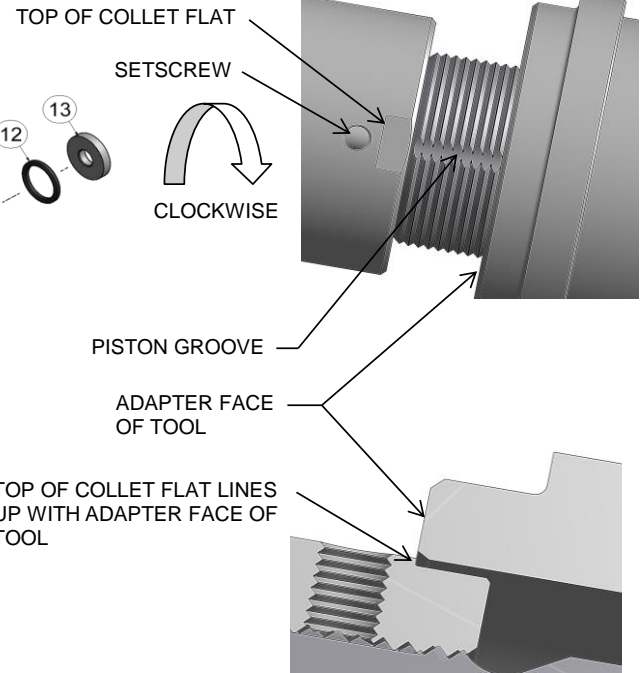
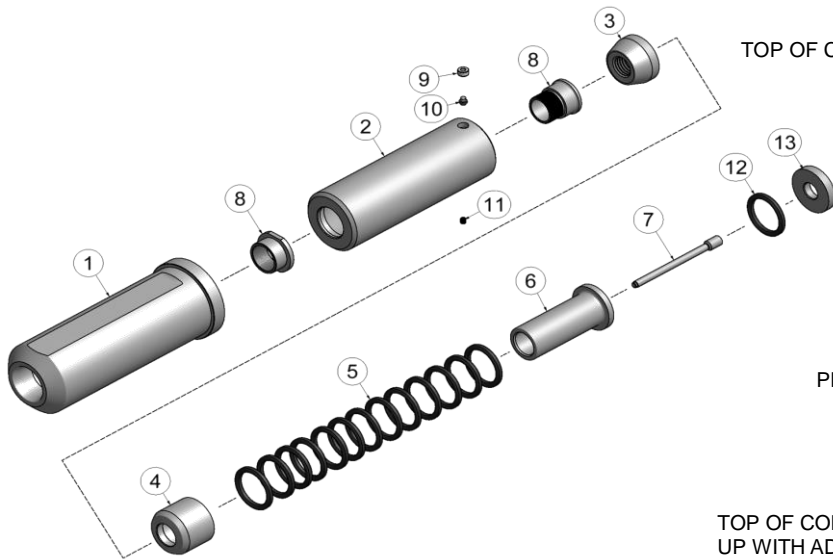


# NOSE ASSEMBLY DATA SHEET



1. Ensure Piston is in full forward position.
2. Disconnect tool control cord.
3. Screw assembled Collet onto Piston until top of collet flat lines up with face of tool (see below).
4. If Collet Lock (10) is not in Piston groove, continue to turn 1/4 turn clockwise, or less, until lock engages groove.
5. Tighten Set Screw (11).
6. Slide Anvil (1) over assembled Collet. Install Split Ring, Sleeve and Retaining Ring (furnished with tool) .



Rev 8/16

**GAGE BILT**  
MADE in USA

44766 Centre Court Clinton Twp. MI 48038 USA  
Ph: +1 (586) 226-1500 Fax: +1 (586) 226-1505  
solutions@gagebilt.com / www.gagebilt.com

Type:		Fastener:		Recommended Tool: GB2630
Self-Releasing 7/8" Ø		C50L® Lockbolt		
Ref. No.	Qty.	Description		<b>28-2630-70</b>
1	1	Anvil		
2	1	Collet Assembly (Inc. 8, 9, 10 & 11)		
3	1	Jaw Set		
4	1	Follower		
5	13	O'Ring		
6	1	Sleeve		
7	1	Pintail Ejector		
8	1	Release & Ejector Kit		
9	1	Collet Lock Pin Retainer		
10	1	Collet Lock Pin		
11	1	Set Screw		
12	1	O'Ring		
13	1	Spacer		
				12808
				22804
				32801
				42805
				404342
				62803
				52809
				82800
				54505
				54503
				A-280
				404660
				62804