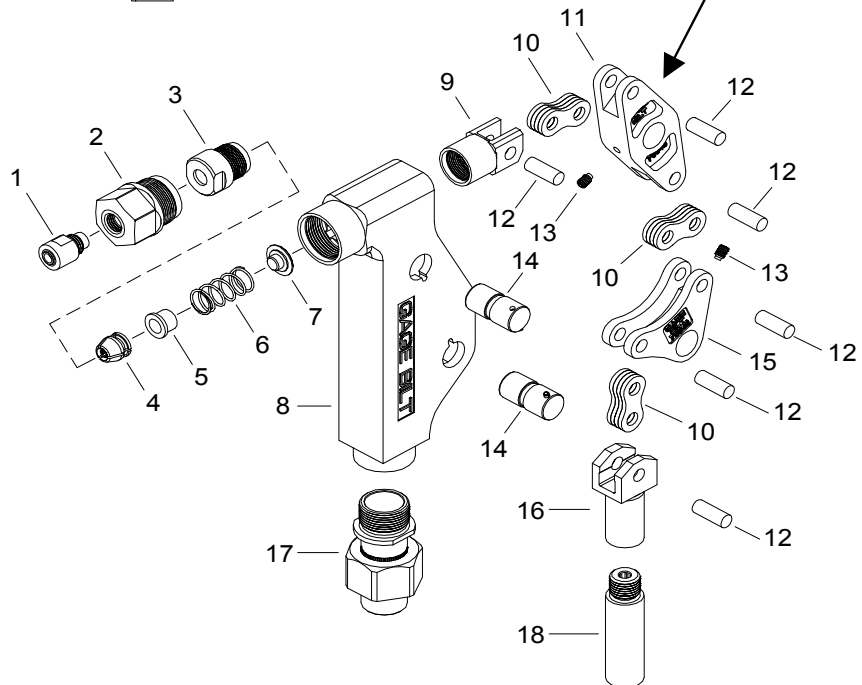
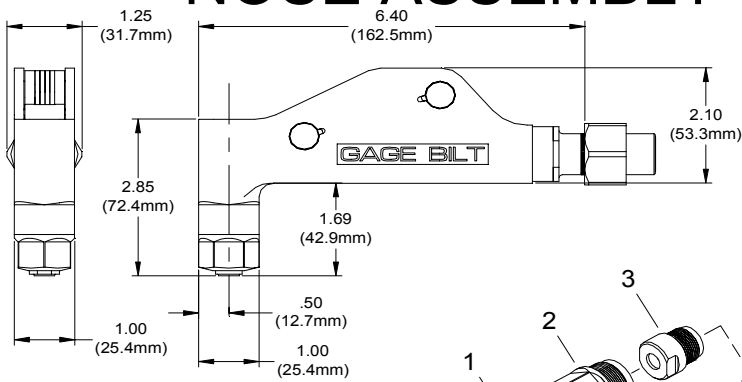


# NOSE ASSEMBLY DATA SHEET



10/10 REV. 3/14

**GAGE BILT**  
MADE IN U.S.A.  
**GAGE BILT Inc.**

44766 Centre Court (586) 226-1500  
Clinton Twp. MI 48038 (586) 226-1505 Fax  
e-mail:solutions@gagebilt.com / www.gagebilt.com

Type:	Fasteners:	Recommended Tool: GB722
Single Action 1/4" Ø	CHERRYMAX® BACR15FR & FP M7885 / NAS9300	

Ref. No.	Qty.	Description	08MAX-713A-58RA
1	1	Nose Tip	18825
2	1	Holder	13424
3	1	Collet	20884
4	1	Jaw Set	30510
5	1	Follower	40854
6	1	Spring	50424
7	1	Locator	60824
8	1	Frame	70864
9	1	Collet Bolt	70839
10	12	Link	70841
11	1	Lever	70843
12	6	Link Pin	70842
13	2	Set Screw	70844
14	2	Pivot Pin Assembly	70845
15	1	Bellcrank	70846
16	1	Drawbolt	70847
17	1	Anvil Adapter Assembly	70868
18	1	Collet Extension	70875

## MOUNTING INSTRUCTIONS

Attach riveter to air source for correct piston positioning. Push the drawbolt assembly forward (see above), before mounting. While holding drawbolt in a forward position, thread the nose assembly onto the riveter, making sure that both internal and external threads are connected. Use the jam-nut to lock the pulling head in position. Cycle the tool to make sure it is functional.

## DISASSEMBLY AND ASSEMBLY

### Disassembly:

Loosen and remove holder (2) from frame (8). Unscrew collet (3) which contains jaws (4), follower (5), spring (6) and locator (7) from collet bolt (9).

Remove 2 set screws (13) and push out 2 pivot pins (14) to permit removal of linkage. Remove link pin (12) from collet bolt (9) and links (10) to disengage from lever (11).

Remove 5 link pins (12) to disassemble lever (11), links (10), bell crank (15) and drawbolt (16).

### Reassembly:

Reverse the procedure. Linkage, consisting of lever (11), links (10), bell crank (15) and drawbolt (16) should be assembled as a subassembly before inserting lever (11) into collet bolt (9). Apply Vibra-TITE® to set screws (13) when reassembling linkage. **MAKE SURE NOTCHES ON COLLET BOLT (9) ARE POINTING TOWARDS LEVER (11).** This complete subassembly may then be inserted into frame (8) and retained by pivot pins (14). Apply Loctite® 242 to threads on Anvil Adapter Ass'y (17) and Collet Extension (18) during reassembly.