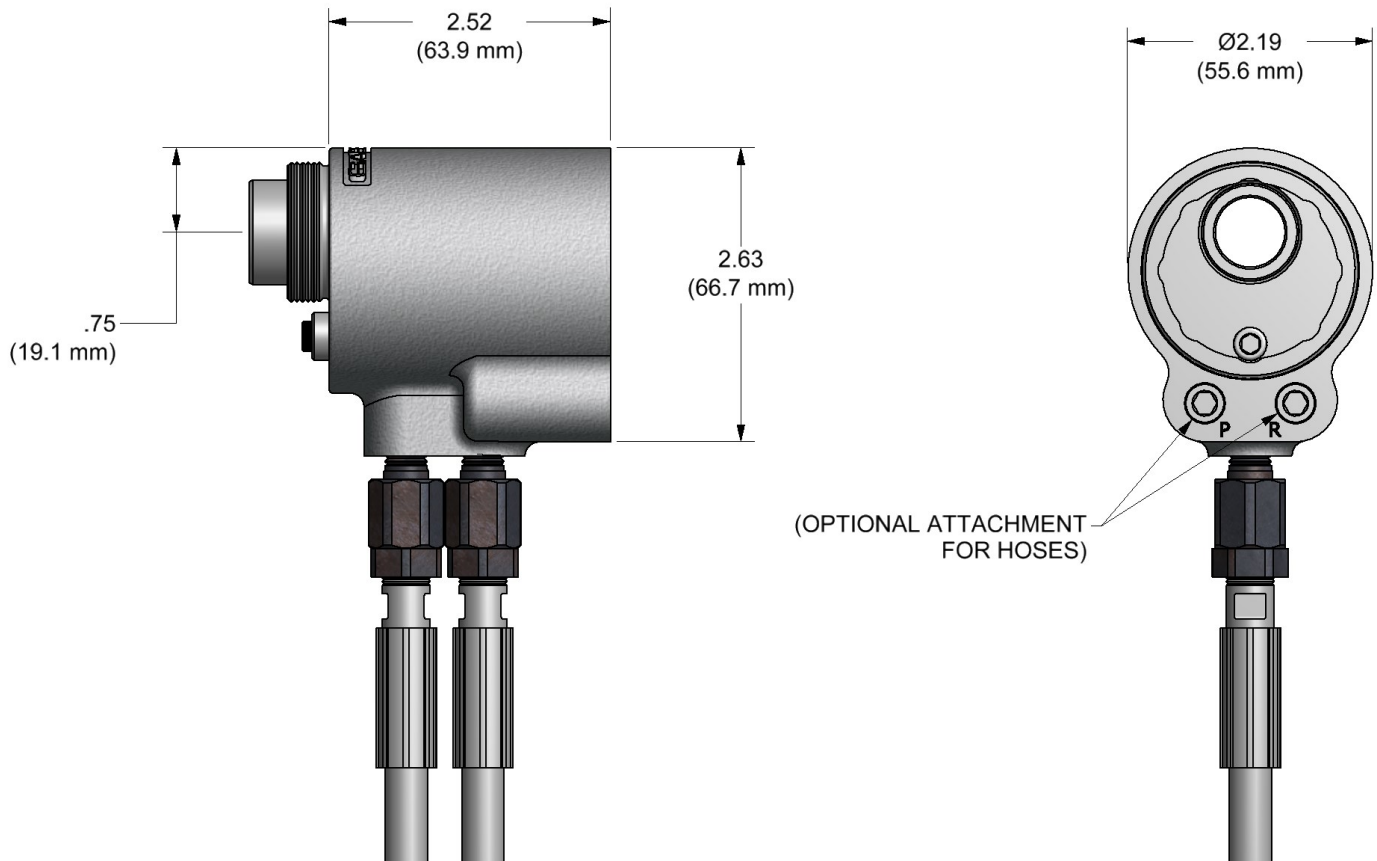


GB205 GB205A

HYDRAULIC INSTALLATION TOOL



DESCRIPTION

The GB205 and the GB205(A) are hydraulic installation tools designed specifically for the efficient installation of blind fasteners and lockbolt fasteners thru 3/8" diameter. It weighs just over 4 lbs. (1.8 kg) and can be operated in any position. It is shipped with a .750" (19.05mm) rivet setting stroke, that can be changed to stroke .625" (15.88mm) for special applications, and has a rated pull load of 10,000 lbs (44.5 kN).

The GB205 (electric actuated) installation tool operates on hydraulic pressure developed by the GB940 Powerunit set at 5,600 psi (386.1 bar) maximum PULL pressure and 2,400 psi (165.5 bar) maximum RETURN pressure. The tool comes equipped with 12 feet (3.65 m) of hydraulic hoses and couplings, electric actuator and cord.

The GB205(A) (air actuated) installation tool operates on hydraulic pressure developed by the GB910 & GB912 Powerunits set at 5,600 psi (386.1 bar) maximum PULL pressure and 2,400 psi (165.5 bar) maximum RETURN pressure. The tool comes equipped with 12 feet (3.65 m) of hydraulic hoses, swivels and couplings, air actuator assembly and tube.

ALL GAGE BILT HYDRAULIC INSTALLATION TOOLS ARE COMPATIBLE WITH HUCK® POWERUNITS.
NOSE ASSEMBLIES ARE NOT FURNISHED WITH THESE TOOLS AND MUST BE ORDERED SEPARATELY.
NOSE ASSEMBLIES ARE NOT FURNISHED WITH THESE TOOLS AND MUST BE ORDERED SEPARATELY.

GAGE BILT
 **MADE in USA**

44766 Centre Court Clinton Twp. MI 48038 USA
Ph: +1 (586) 226-1500 Fax: +1 (586) 226-1505
solutions@gagebilt.com / www.gagebilt.com



ACCESSORIES



GB205/205A NOSE ASSEMBLY SELECTION CHART

Relief Valve

#208109

When a reduced stroke to .625" (15.9 mm) is required. See Chart. (Sold Separately)



Stroke Limiter

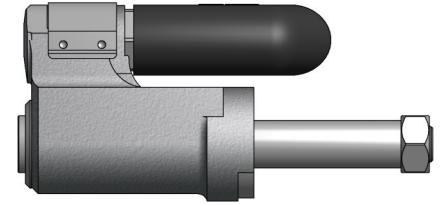
#208112

Required with 208109 relief valve to reduce stroke to .625" (15.9 mm). See Chart. (Sold Separately)



NOSE ASSEMBLY

(Sold Separately)



FASTENER	DIA.	NOSE ASSEMBLY
PULL-IN HI-LITE®	9/16"	HL18-205B-35
	5/8"	HL20-205B-35
	3/4"	HL24-205B-35
	7/8"	HL28-205B-35
	1"	HL32-205B-35
	1-1/4"	HL36-205B-35
LOCKBOLT, NAS SHEAR PULL TYPE, NAS TENSION PULL TYPE, NASS = SHEAR & GP® NAST = TENSION	1/4"	NAS08-205A-31
	5/16"	NAS10-205D-31
	3/8"	NAS12-205A-31
LGP® Lightweight Groove Proportion LOCKBOLT	1/4"	LGP08-205C-31
	5/16"	LGP10-205D-31
	3/8"	LGP12-205A-31
BLIND BOLT (SINGLE ACTION) WITH OR W/OUT DRIVE WASHER MS90353S & U / MS90354S & U MS21140S & U / MS21141S & U MAXI-BOLT®, BACB30YY, YU, & YT	1/4"	SB08-205A-35
	5/16"	SB10-205A-35
	3/8"	SB12-205A-35

HI-LITE® IS A REGISTERED TRADEMARK OF HI-SHEAR CORPORATION. LGP® AND GP® ARE REGISTERED TRADEMARKS OF ARCONIC INC. MAXI-BOLT® IS A REGISTERED TRADEMARK OF CHERRY AEROSPACE FASTENERS.

GAGE BILT CERTIFIES THE GB205 WILL INSTALL THE ABOVE FASTENERS

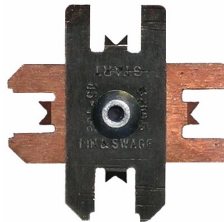
*TO REDUCE STROKE TO .625" RELIEF VALVE (208109) AND STROKE LIMITER (208112) ARE AVAILABLE.

NOTE: THE LAST 2 DIGITS OF THE NOSE ASSEMBLY REPRESENTS THE LENGTH THE NOSE ASSEMBLY EXTENDS FROM THE TOOL. (I.e. -25 = 2.5 inches)

11/16

Grip Gage #GB105093 (Equivalent to #105093)

For NAS LOCKBOLTS and blind fasteners (Sold Separately)



Gage Bilt also supplies pin & collar swage inspection gages to certify correct swage installation (Sold Separately)

