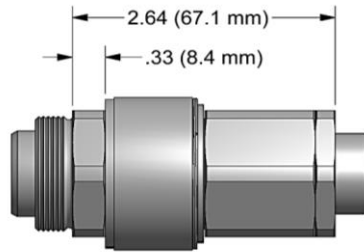
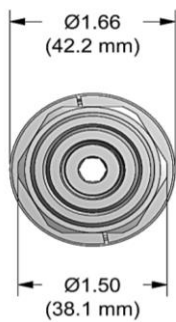


# 256208 ADAPTER DATA SHEET



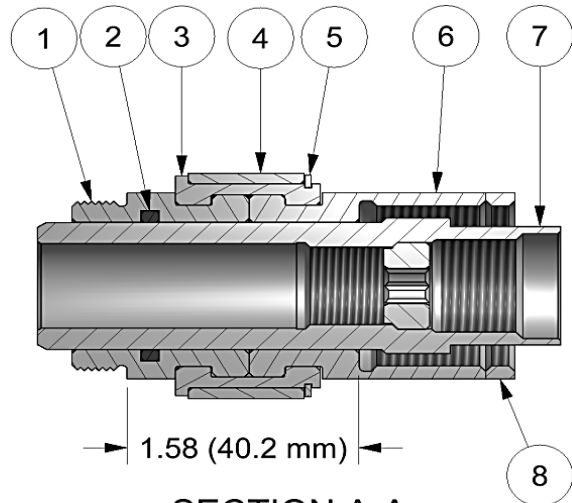
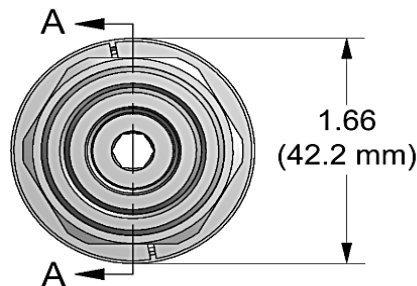
## CAUTION

Pintail may eject forcibly.  
Used for closed access applications  
only to prevent severe personal injury!

To remove adapter and nose from tool  
reverse assembly instructions

To attach adapter and nose to tool:

1. Thread on lock-nut (8), install nose on adapter. Use tee wrench (9) and tighten adapter drawbar assy (7). Thread onto tool as far as possible while remaining freely rotatable. Tighten lock-nut (8) against nose adapter to lock adapter into place). Note: Collet and anvil face to be flush to .030 max. gap on nose assy when correctly installed.



SECTION A-A



4/15

# GAGE BILT

## GAGE BILT, INC.

44766 Centre Court (586) 226-1500  
Clinton Twp., MI 48038 (586) 226-1505 Fax  
e-mail:solutions@gagebilt.com / www.gagebilt.com

Type:		Adapts GB208 style noses, 99-3790, 99-3754, 99-3719, 99-1754DG & 99-1719FBDG to GB745, GB756, GB2581, 246, & 2502	
Rotatable Offset Nose Assembly Adapter			
Ref. No.	Qty.	Description	256208
1	1	Anvil Adapter	756261
2	1	O'ring	403806
3	1	Split Ring	756262
4	1	Retaining Sleeve	756263
5	1	Retaining Ring	408423
6	1	Adapter-Nose	756260
7	1	Adapter-Drawbar Assy	756259
8	1	Lock-Nut	756264
9	1	Tee Wrench (not shown)	405824